

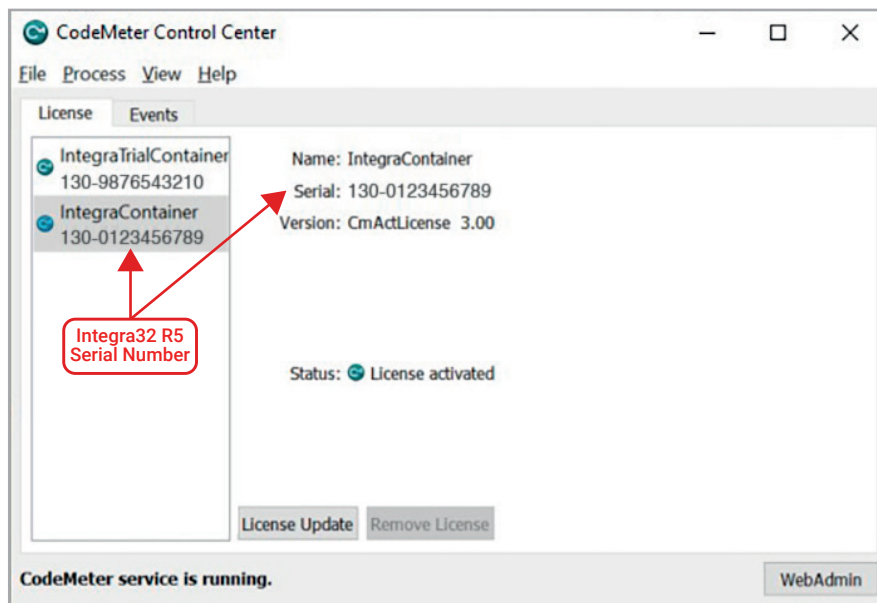
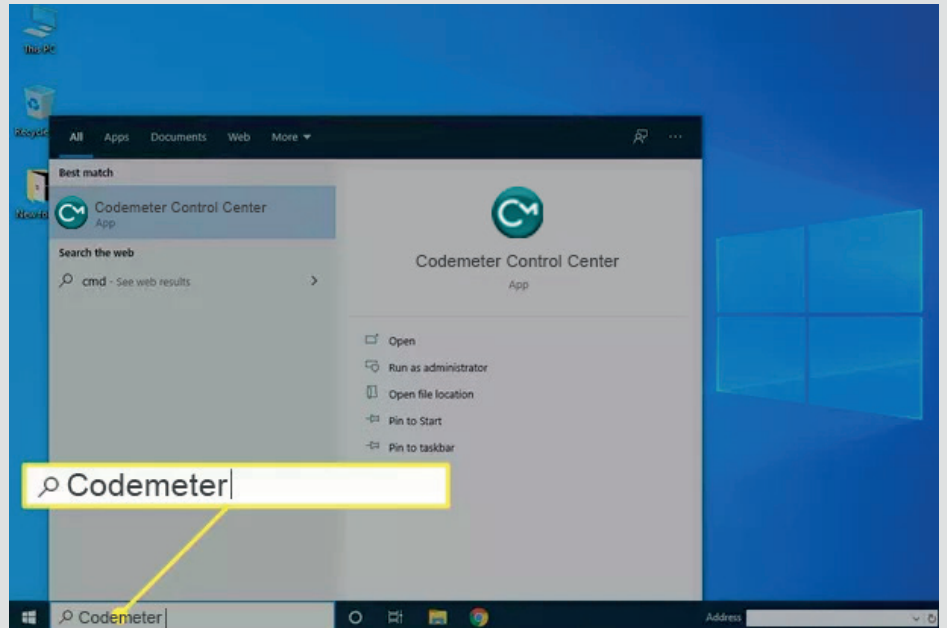
Locating Integra32 R5 serial number via the CodeMeter Control Center app

Serial numbers are only used in Integra32 R5 and onwards (serial numbers were not used in Integra32 R4.x). If you are unable to LOG ON to your Integra32 R5 system you can locate the serial number by following the steps below.

Access to CodeMeter

On the Integra32 Server select the Windows DESKTOP SEARCH ICON and type in CODEMETER

Select the **CodeMeter Control Center app**.



Note your official serial number

The serial number under the **IntegraContainer** is your official and unique serial number.

(do not use the serial number under **IntegraTrailContainer**)

If you need any additional support locating your serial number please contact your local RBH representative.