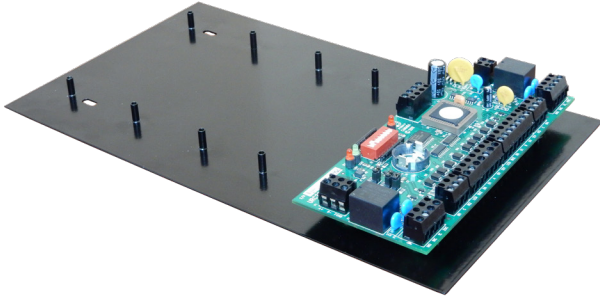


# RBH-AX-MNT-PLT

## Adapter Plate



The 'RBH-AX-MNT-PLT' is the perfect circuit board mounting companion to the RBH Line of housings and cabinets. Designed to fit directly into RBH's 'ENCL2' and 'ENCL2-PS' cabinets providing convenient mounting of the IRC, URC, and NURC reader boards.

The sleek convenient design allows for mounting of up to three URC / NURC style reader controllers per mounting plate OR one IRC / NIRC and one URC / NURC reader controllers.

In addition the unique portable design also make the 'RBH-AX-MNT-PLT' the ideal tool for retrofitting older systems allowing RBH controllers to easily and conveniently be mounted into the existing cabinets from the outdated system.

Specifications	
Size	7 inches x 11 inches



\*Designed to fit into ENCL2 / ENCL2-PS



\* AX-MNT-PLT mounted into ENCL2-PS shown with three x NURC-2002-B



**RBH**  
**ACCESS**

[WWW.RBH-ACCESS.COM](http://WWW.RBH-ACCESS.COM)

© RBH Access Technologies, Inc. 2016