

Integra 32™

A SECURITY MANAGEMENT SOLUTION BY RBH

URC-2008 Elevator Controller



- **Small footprint**
- **Simple to install**
- **Optimal capacity**
- **Distributed architecture**
- **Flash Firmware updates**
- **Built-in clock and calendar**
- **Expandable to 32 floors**
- **LOW COST!**

The URC-2008 Elevator Controller allows control of up to two elevator cabs with 8 floors total. Can be expanded to control up to 32 floors. It utilizes flash firmware for easy upgrades, and employs fully distributed intelligence for off-line operations. Decisions such as access level changes, schedule activation and card expiration are made by the URC-2008 controller without the need of a computer.

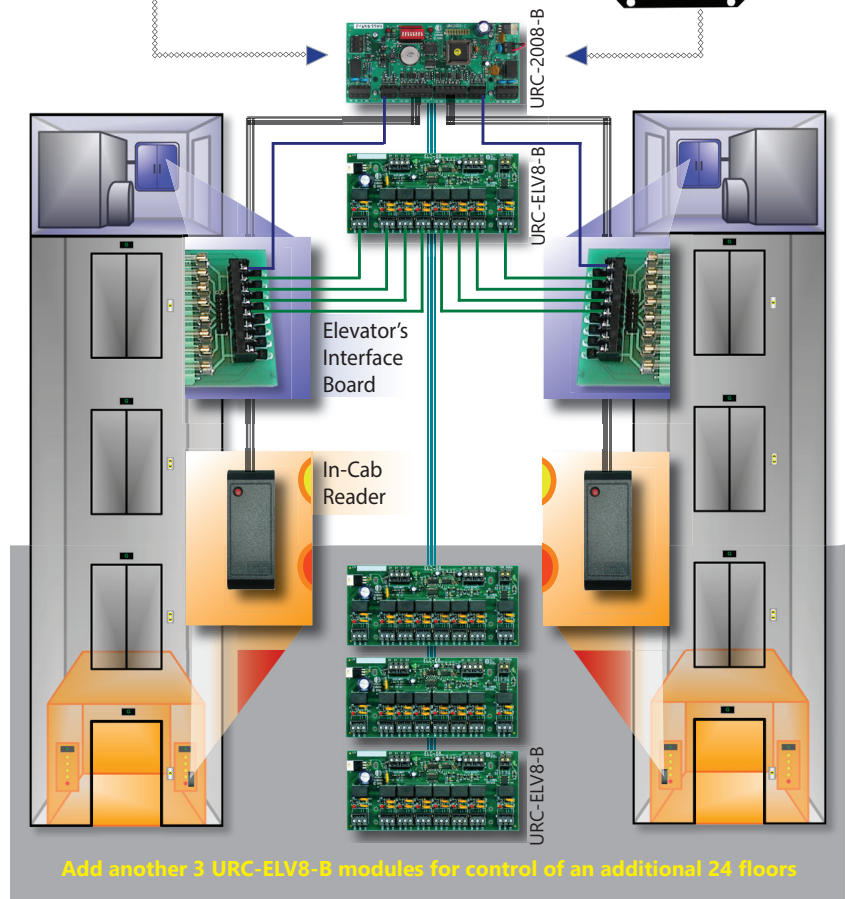
The panel contains on-board clock and memory backup as well as thermal overload protection. URC-2008 supports fully supervised communication via RS-485 and TCP/IP with selectable communication speed up to 56.6Kbps.

Connect to the Integra32 Server PC via IRC-2000 controllers or directly via a RS232/485 convertor, for a total of up to 16 panels per controller network.

Connect to PC via:
TCP/IP Network



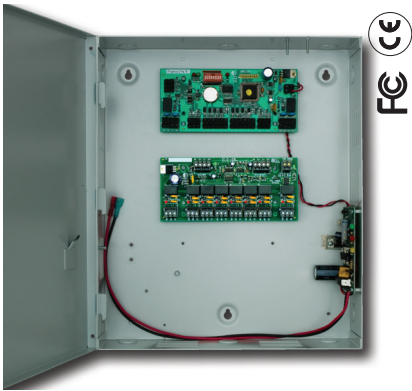
UNC
Panels



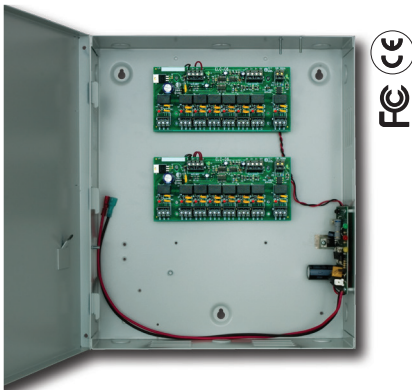
RBH
ACCESS

WWW.RBH-ACCESS.COM

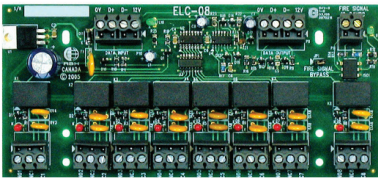
© RBH Access Technologies, Inc. 2021



URC-2008 includes one URC-2008-B controller and one URC-ELV8-B module installed in an ENCL1-PS enclosure as shown above.



Two URC-ELV8-B modules shown installed in an ENCL1-PS enclosure.



The URC-ELV8-B relay output module is designed for mounting in the standard ENCL1 enclosure. Available individually or as part of the URC-2008.

URC-2008 Elevator Controller

Panels per Network :	16
Local PC & Remote Connections :	Supervised RS485 via TCP/IP Ethernet, USB and Serial Ports
Communication Between Controllers:	Supervised RS-485
Speed :	Programmable 9.6-56 Kbps
Distance :	4,000 ft (1,200 m)
Cable Type :	18AWG, 2 conductor, twisted, stranded, shielded
Cards per Panel :	3,000 (up to ten digit card numbers)
Access Levels per Panel :	3,000 (one per card per panel)
Site Codes per Panel :	10 (site code programming is not mandatory)
Off line Transactions Buffer :	3,000 FIFO, command, and alarm priority
Access Points (Readers/Keypads) :	2 with LED and Buzzer control
Distance :	Max 500 ft (150 m)
Cable Type :	20 - 22 AWG, 6 or 8 conductor, stranded, shielded
Simultaneous Card Formats per Panel:	5, All Wiegand compatible readers supported
Programmable Supervised Inputs :	4
Input Supervision :	Four state monitoring (1 or 2 resistors)
Distance :	Max 1,000 ft (300 m)
Cable Type :	20 - 22 AWG, 2 conductor
Programmable Outputs :	2 SPDT 2A @ 30 VDC, dry contacts
Output mode :	2 Electronic drivers, 12 VDC max, 100 mA Programmable Fail Safe/Fail Secure
Power Requirements :	16.5 VAC, 40VA transformer (not included)
Recommended Back-up Battery :	12V, 7AH lead acid or gel cell (not included)
Max URC-ELV8-B modules per URC-2008-B :	4
URC-ELV8-B Interconnect :	4 Conductor, 18 AWG Shielded
URC-ELV8-B boards per ENCL1 enclosure :	2 (1 if installed with URC-2008-B)
URC-ELV8-B Elevator Control Outputs :	8 SPDT 2A @ 30 VDC, dry contacts LED status display for each output
URC-ELV8-B Fire alarm Input :	12 VDC



WWW.RBH-ACCESS.COM

© RBH Access Technologies, Inc. 2021