

Technical Bulletin

2 Automatic Road, Suite 108
Brampton, Ontario
Canada L6S 6K8

Email: support@rbh-access.com Web: www.rbh-access.com

Number: 71

Group Cards Antipassback

Global Antipassback by Grouping Cards function is optional feature, license is required.

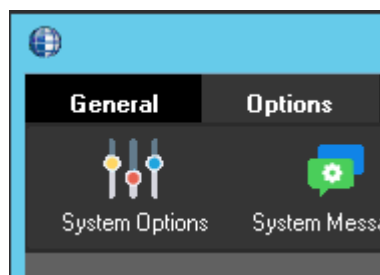
This document describes the functionality of Global Antipassback based on *Group Cards*.

This option, if selected, tells the system that cards under a single cardholder are to be grouped, so that if one of these cards is used to enter an area, all of the cards in the group (cards assigned to the same cardholder) will not be allowed to enter the same area. Also, any one of the cards in the group assigned to that cardholder may be used to go into another area.

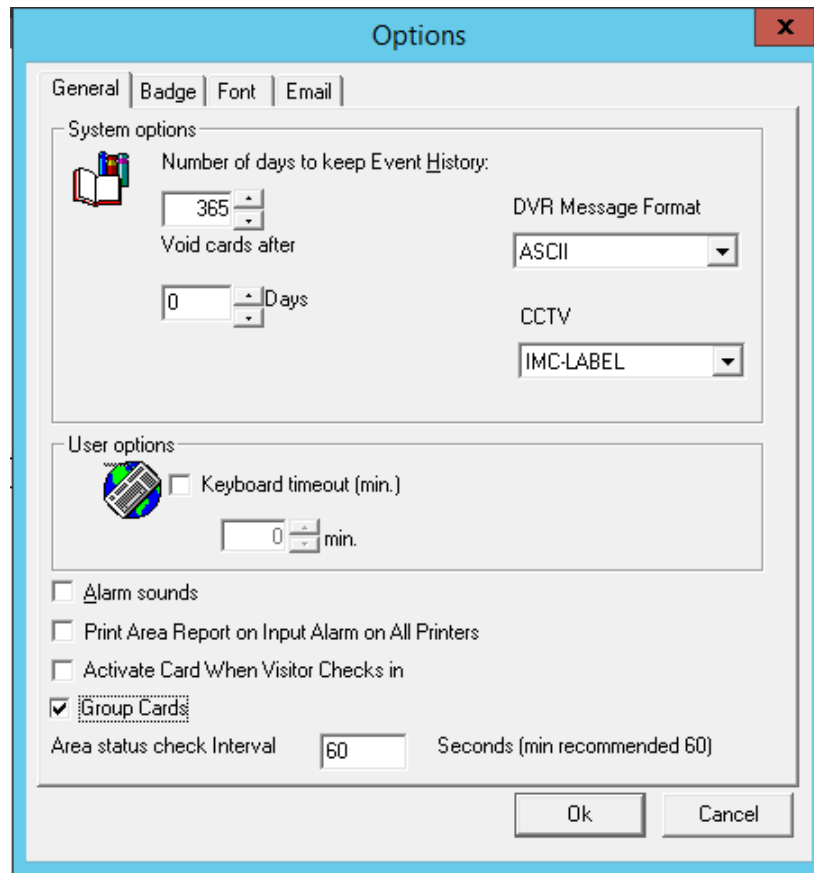
This feature is used for higher security so that cardholders who have more than one card assigned aren't able to pass the cards to other users.

For this functionality to work *PC Decision Required* and *Hard Antipassback* must be ON.

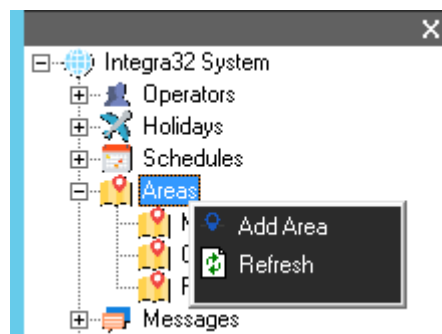
To Configure the *Group Cards*, go to *system options* in the *option* menu as shown below:

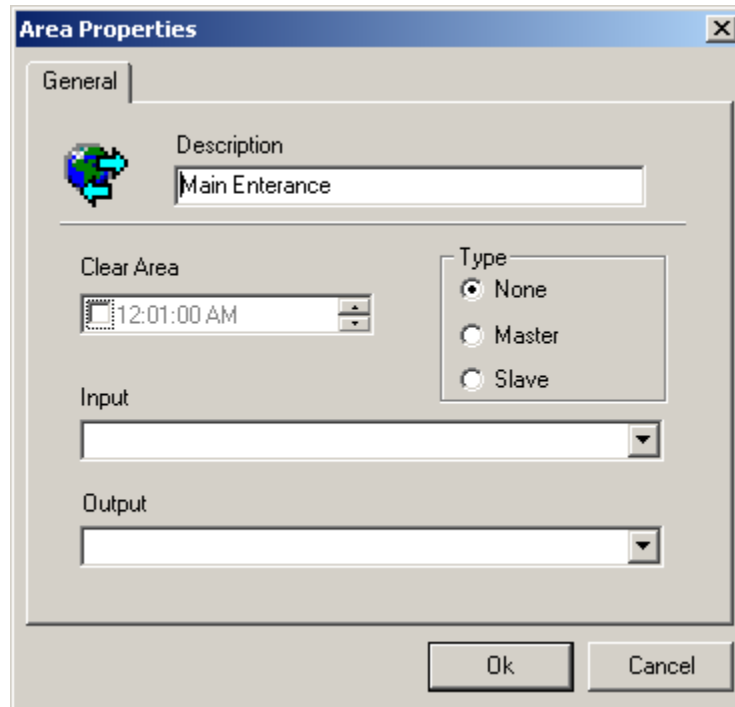


Check in *Group Cards* in the *General* tab of *Options*' Properties window.

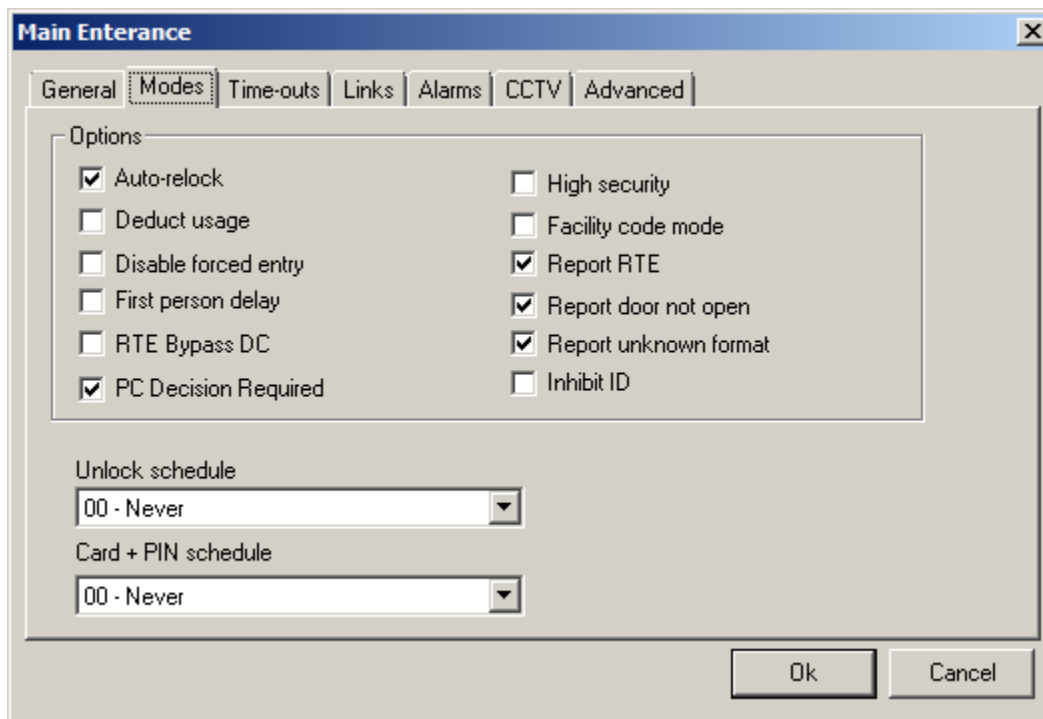


Add the *Areas* in the System as required.



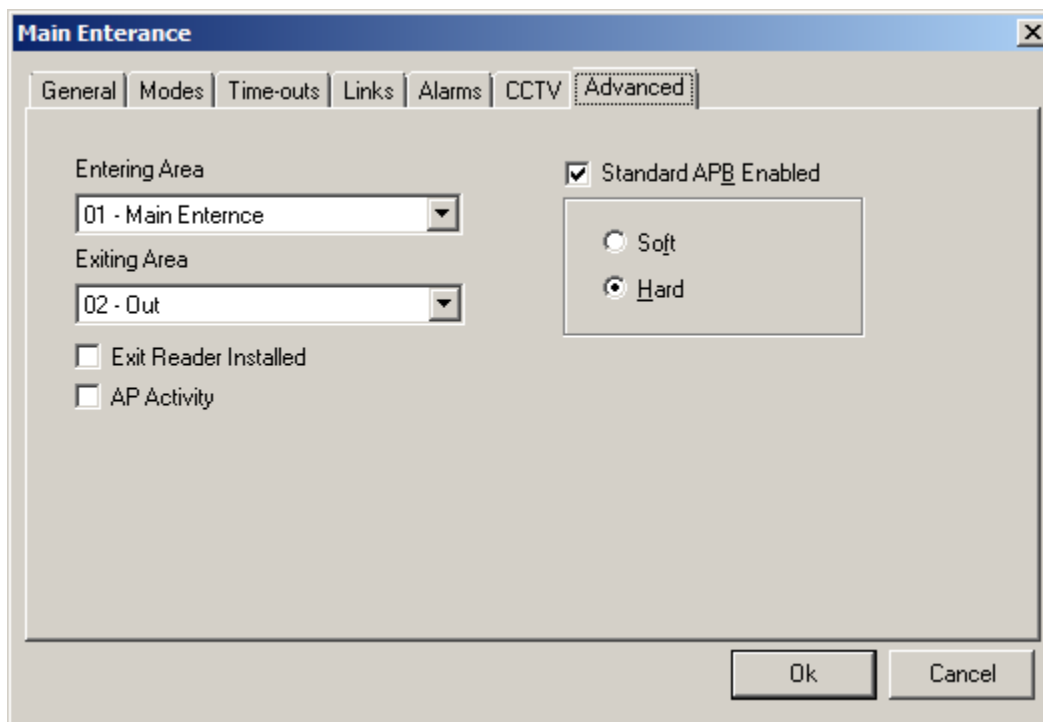


Select the *PC Decision Required* in the *Modes* tab of Access point Properties window.



Select an *Entering* and *Exiting* Area or just the *Entering* Area as per your requirements and check *Standard APB Enabled* in the *Advanced* tab of the Access point properties window.

Select *Hard* radio button to enable *Global Hard Antipassback*.



Add a new cardholder with multiple cards assigned to the cardholder or assign multiple cards to existing cardholder.

If the *Group Cards* option wasn't selected, Global Hard Antipassback applies to cards and therefore in the above scenario, even if card 1001 has entered a specific area, card 1002, 1003 and 1004 can still enter in the same Area as can be seen in the following screen:

| Device Status | Reader Inputs Outputs Panels Areas Cardholders Keypads Floors Visitors | | | | | |
|---------------|----------------------------------------------------------------------------------------------------------------------------------------------------------------------------------------|----------|-----------|------------|---------------|----------------------|
| | Number | Lastname | Firstname | Department | Area | Date |
| | 1001 | Card | Test | | Main Entrance | 6/7/2012 11:54:57 AM |
| | 1002 | Card | Test | | Main Entrance | 6/7/2012 11:55:06 AM |

| Event log | Date | Log message |
|-------------------|------------------------------------------------------------------|-----------------------------------|
| | 6/7/2012 11:54:12 | Audit message: Log window cleared |
| 6/7/2012 11:54:54 | Access requested: Card Test Card (1001) Main Entrance Panel 79-2 | |
| 6/7/2012 11:54:57 | Access granted: Card Test Card (1001) Main Entrance Panel 79-2 | |
| 6/7/2012 11:55:05 | Access requested: Card Test Card (1002) Main Entrance Panel 79-2 | |
| 6/7/2012 11:55:06 | Access granted: Card Test Card (1002) Main Entrance Panel 79-2 | |

With the *Group Cards* option selected, all of the cards 1001-1004 assigned to the same cardholder will be checked as a group so that if one of the cards has been used to enter an area, all the grouped cards for the same cardholder will be shown in the same Area, and therefore if any other cards in the group tries to enter the same Area, access will be denied as shown below:

| Device Status | Reader Inputs Outputs Panels Areas Cardholders Keypads Floors Visitors | | | | | |
|---------------|----------------------------------------------------------------------------------------------------------------------------------------------------------------------------------------|----------|-----------|------------|---------------|----------------------|
| | Number | Lastname | Firstname | Department | Area | Date |
| | 1001 | Card | Test | | Main Entrance | 6/7/2012 11:58:55 AM |
| | 1002 | Card | Test | | Main Entrance | 6/7/2012 11:58:55 AM |
| | 1003 | Card | Test | | Main Entrance | 6/7/2012 11:58:55 AM |
| | 1004 | Card | Test | | Main Entrance | 6/7/2012 11:58:55 AM |

| Event log | Date | Log message |
|-------------------|------------------------------------------------------------------------|------------------------------------------------|
| | 6/7/2012 11:58:43 | Audit message: Record changed [System Options] |
| 6/7/2012 11:58:55 | Access requested: Card Test Card (1001) Main Entrance Panel 79-2 | |
| 6/7/2012 11:58:55 | Access granted: Card Test Card (1001) Main Entrance Panel 79-2 | |
| 6/7/2012 11:59:01 | Access requested: Card Test Card (1002) Main Entrance Panel 79-2 | |
| 6/7/2012 11:59:01 | Access denied: APB violation Test Card (1002) Main Entrance Panel 79-2 | |
| 6/7/2012 11:59:04 | Access requested: Card Test Card (1003) Main Entrance Panel 79-2 | |
| 6/7/2012 11:59:04 | Access denied: APB violation Test Card (1003) Main Entrance Panel 79-2 | |
| 6/7/2012 11:59:07 | Access requested: Card Test Card (1004) Main Entrance Panel 79-2 | |
| 6/7/2012 11:59:07 | Access denied: APB violation Test Card (1004) Main Entrance Panel 79-2 | |