

# BFR-XXX

*Fingerprint Reader*

---

**INSTALLATION  
MANUAL**



## Step 1:

**Connection** - Remove the BFR from its packaging and connect it to the control panel's reader port and to the LAN as shown in Fig 1.

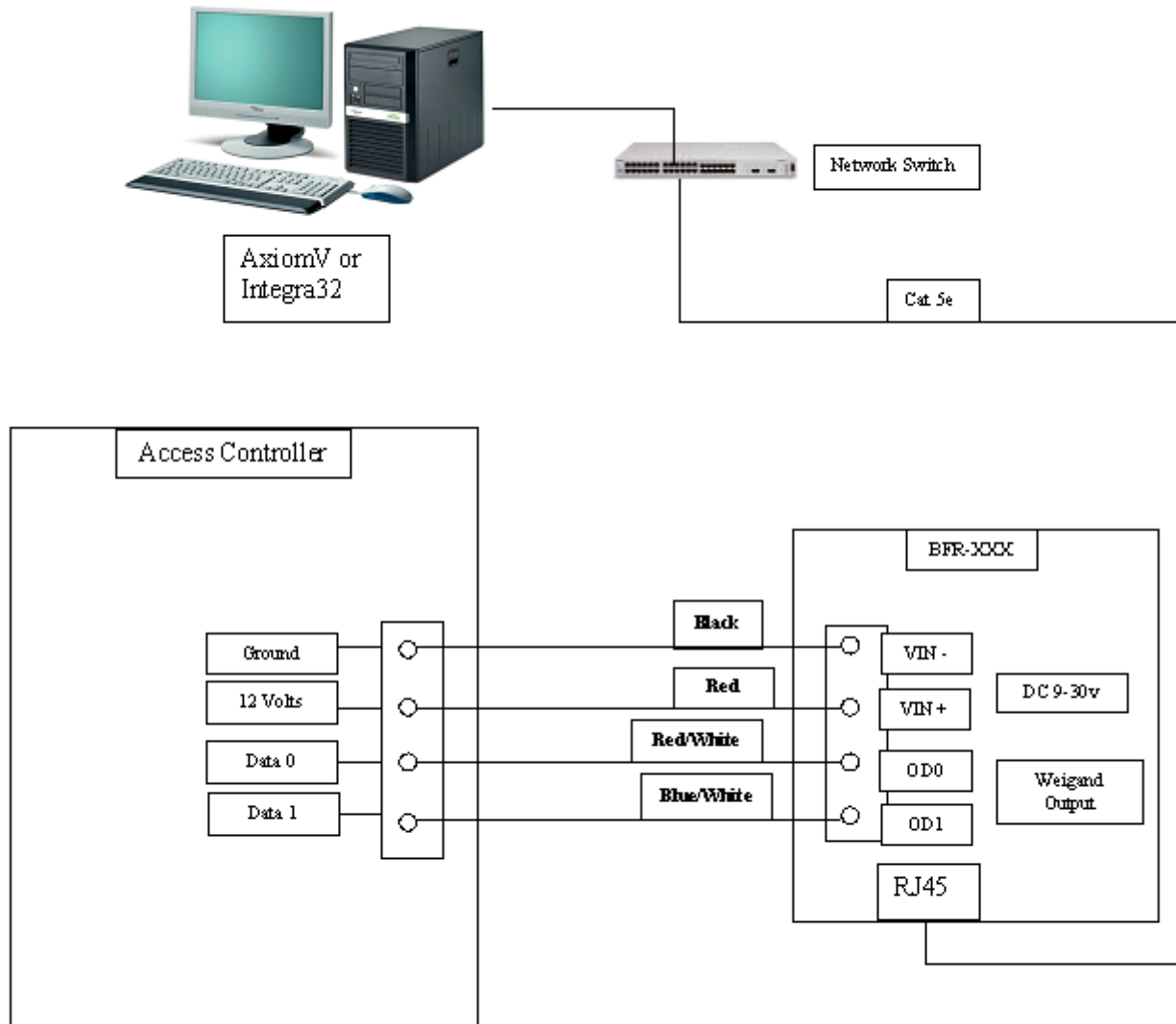


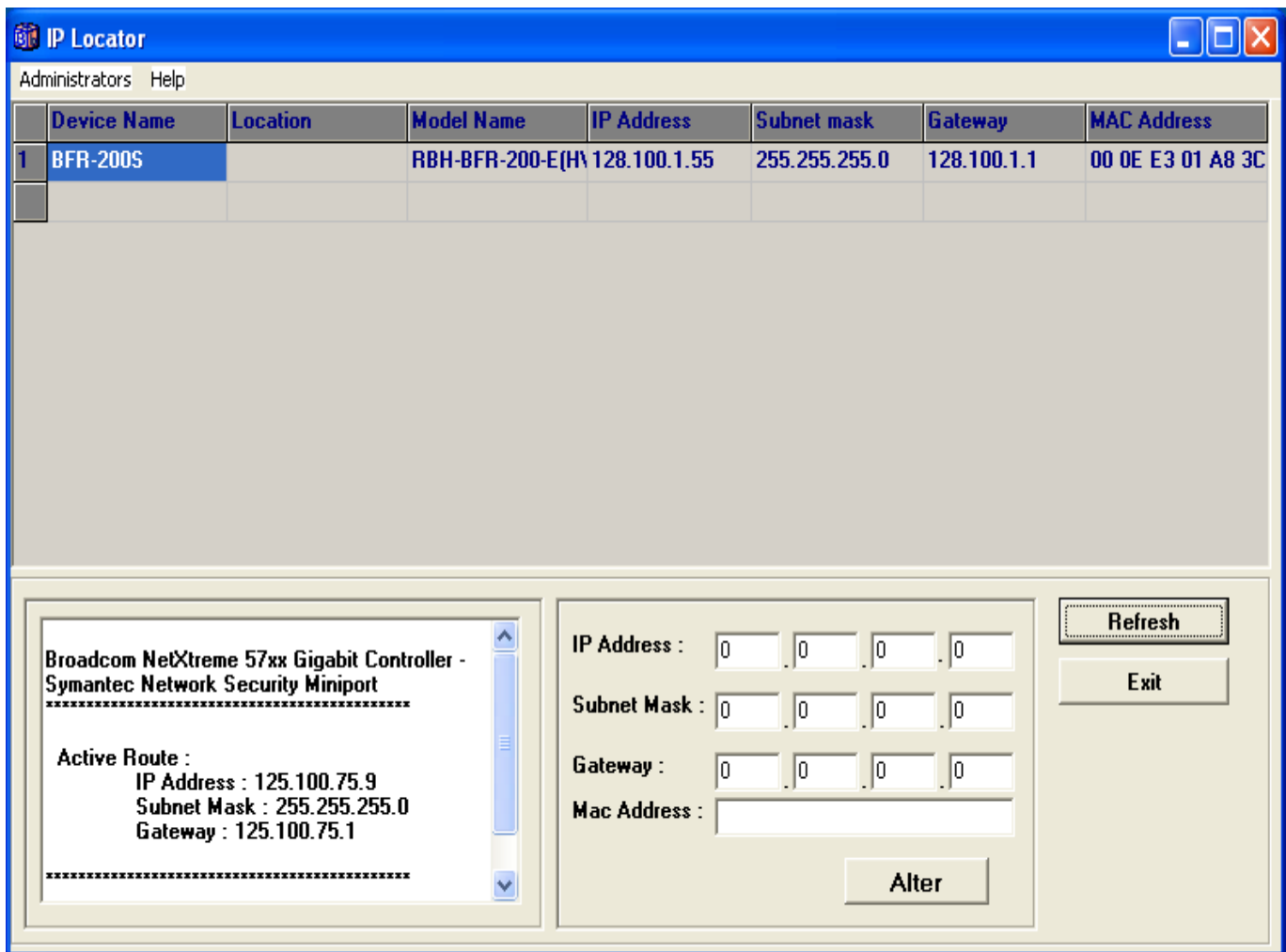
Fig. 1

## Step 2:

**Configuring IP** – There is two methods to configuring the IP address for the BFR-XXX fingerprint reader. You can use “IP Locator” and /or “the built in Web page”.

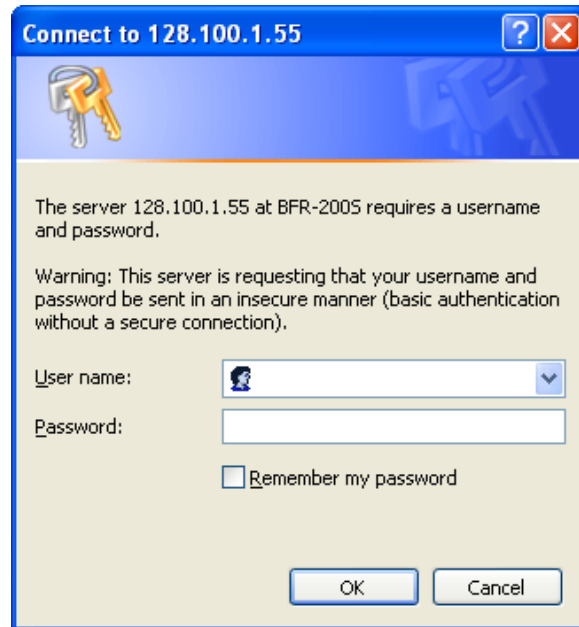
### Method 1:

IP Locator - On the AxiomV™ or Integra32™ CD in the Communication folder, locate the IP Locator program and run it. Selecting the ‘Refresh’ button will display all units in the upper box as shown. Select a unit to change, and its data will be displayed in the fields below. Change the data as required and select “Alter”. A password box will appear (the default is password is blank, no password). This will change the IP to the desired network address.



## Method 2:

Built in Web Page – Change your computer’s IP address to be in the acceptable range of the BFR-XXX’s default IP [192.168.0.66]. In your web browser enter the Default address of the BFR-XXX and the following box will appear.



Enter User name “RBH” and Password “password” (it is case sensitive) and the following window will appear.

**System Status**

Product Name :	RBH-BFR-200S(HW1.2)
Firmware Version :	4.00.03, Feb 2 2012
System Time :	03/02/2012 08:53:26 GMT-05
Terminal ID :	1
Description :	RBH
Registered User :	3
Log Count :	132
Wiegand Format :	Customize
Wiegand Output :	Customize

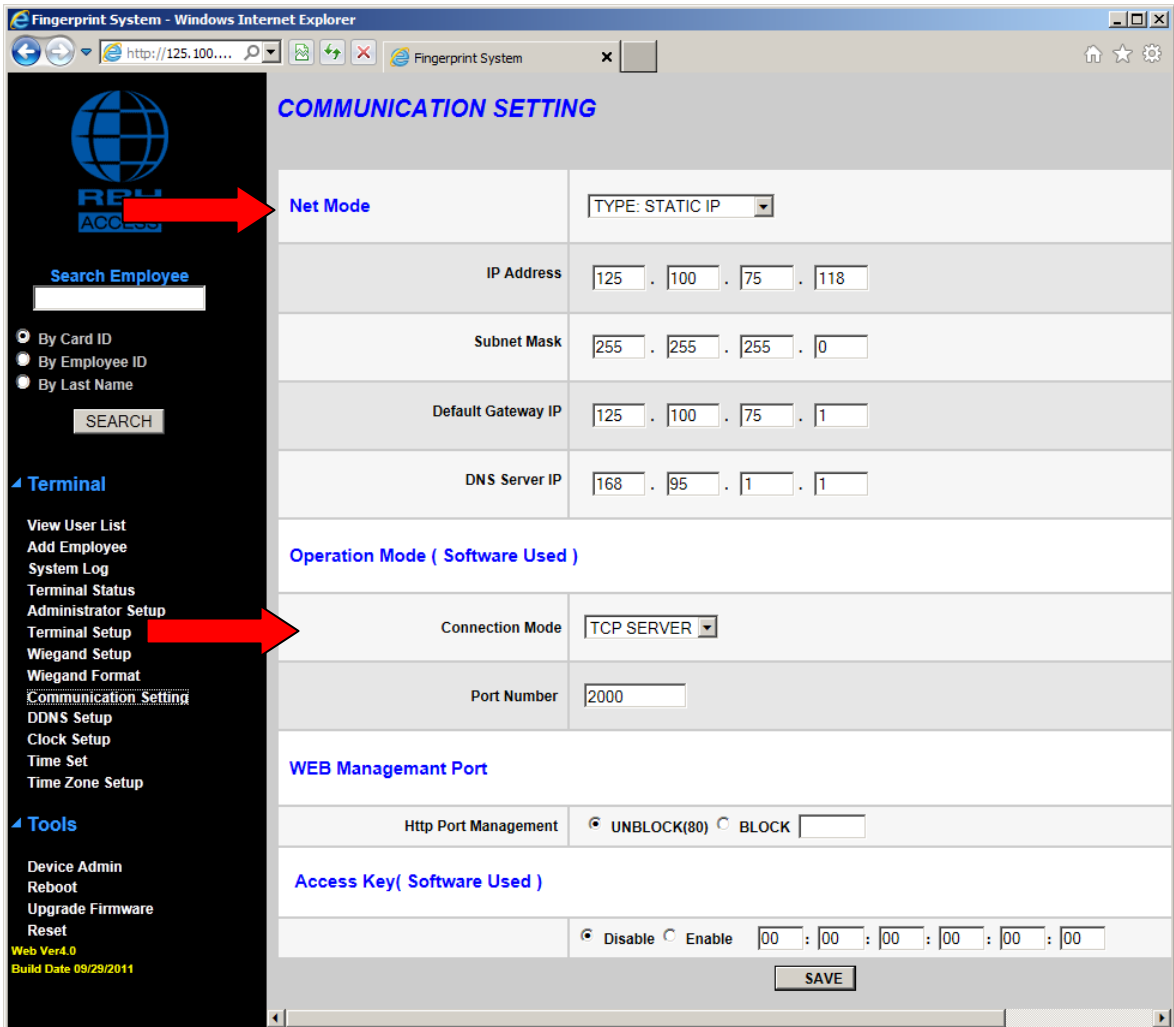
**Ethernet Status**

MAC Address :	00:0e:e3:02:48:1f
IP Address :	125.100.75.118
Subnet mask :	255.255.255.0
Default Gateway :	125.100.75.1
Primary DNS :	168.95.1.1

Select the *Communication Settings* to go to the IP configuration page. Edit the IP settings and click on *SAVE*.



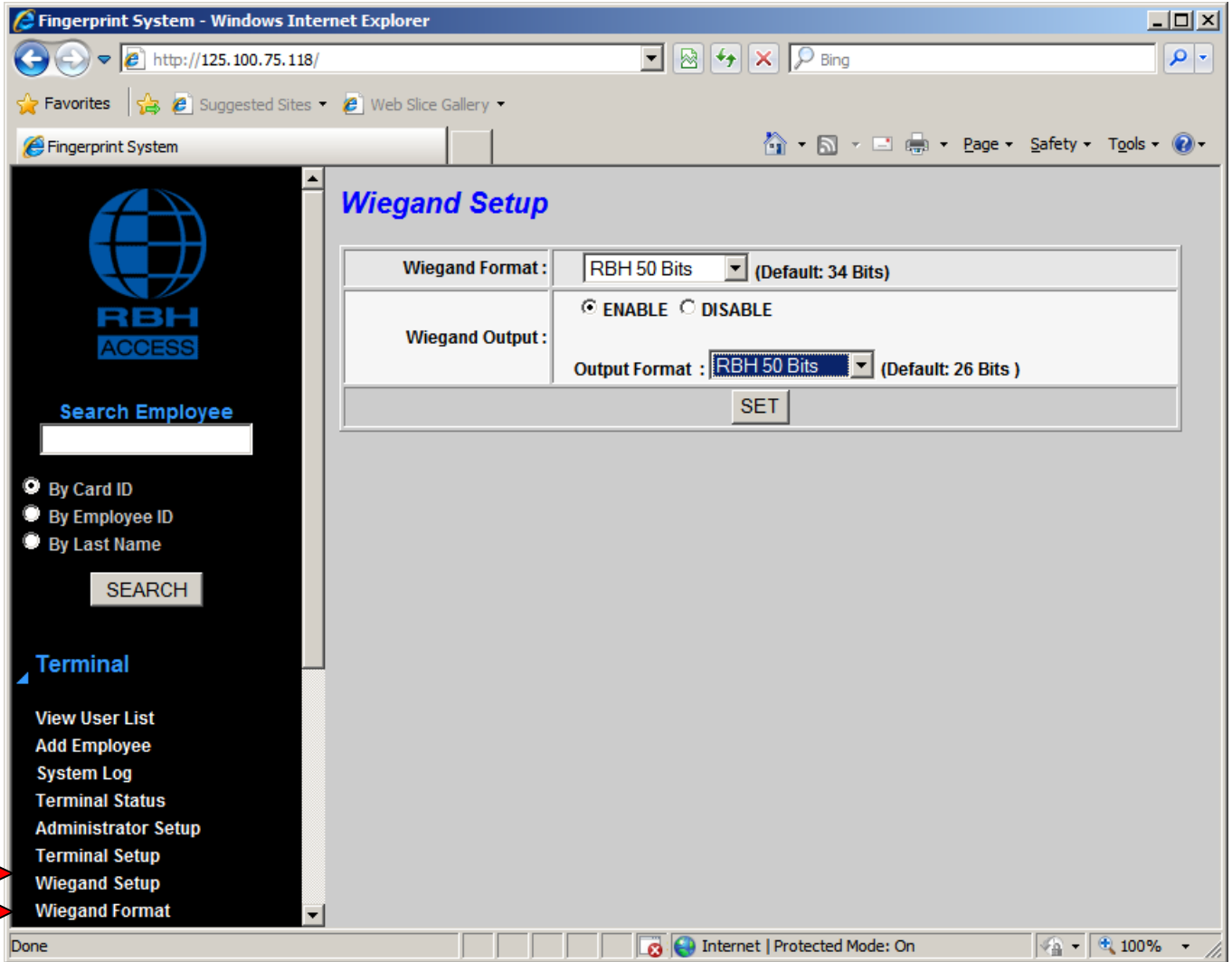
**Note:** Always use *STATIC IP* for *Type* and *TCP SERVER* for *Connection Mode*.



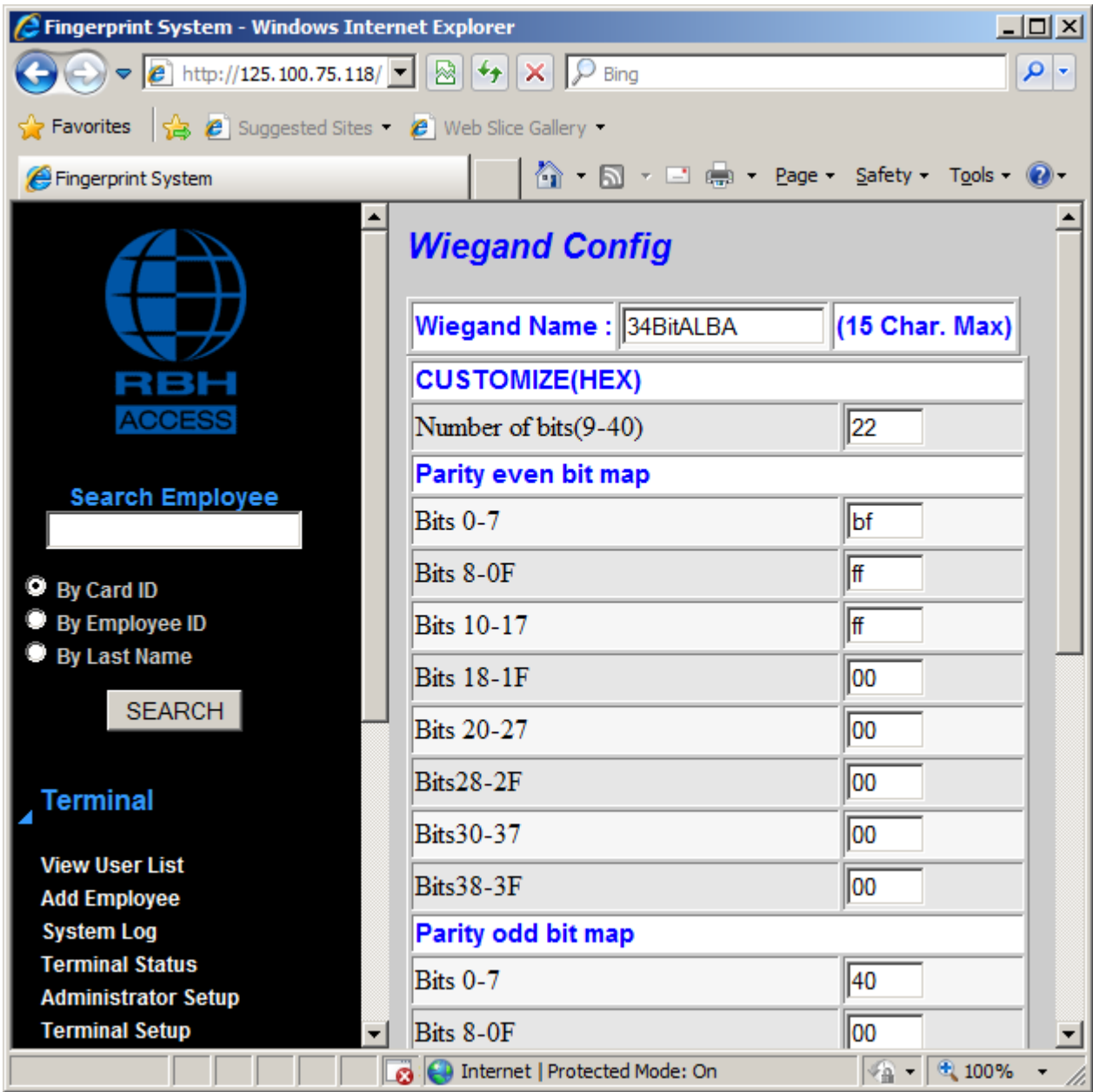
Click the *SAVE* button.

### Step 3:

**Configuring Weigand Output** – You can either select one of the predefined weigand formats or configure a customize format. To select one of the predefined formats, click on *Weigand Setup*, and select the required format in both the fields as shown below and click on *SET*.

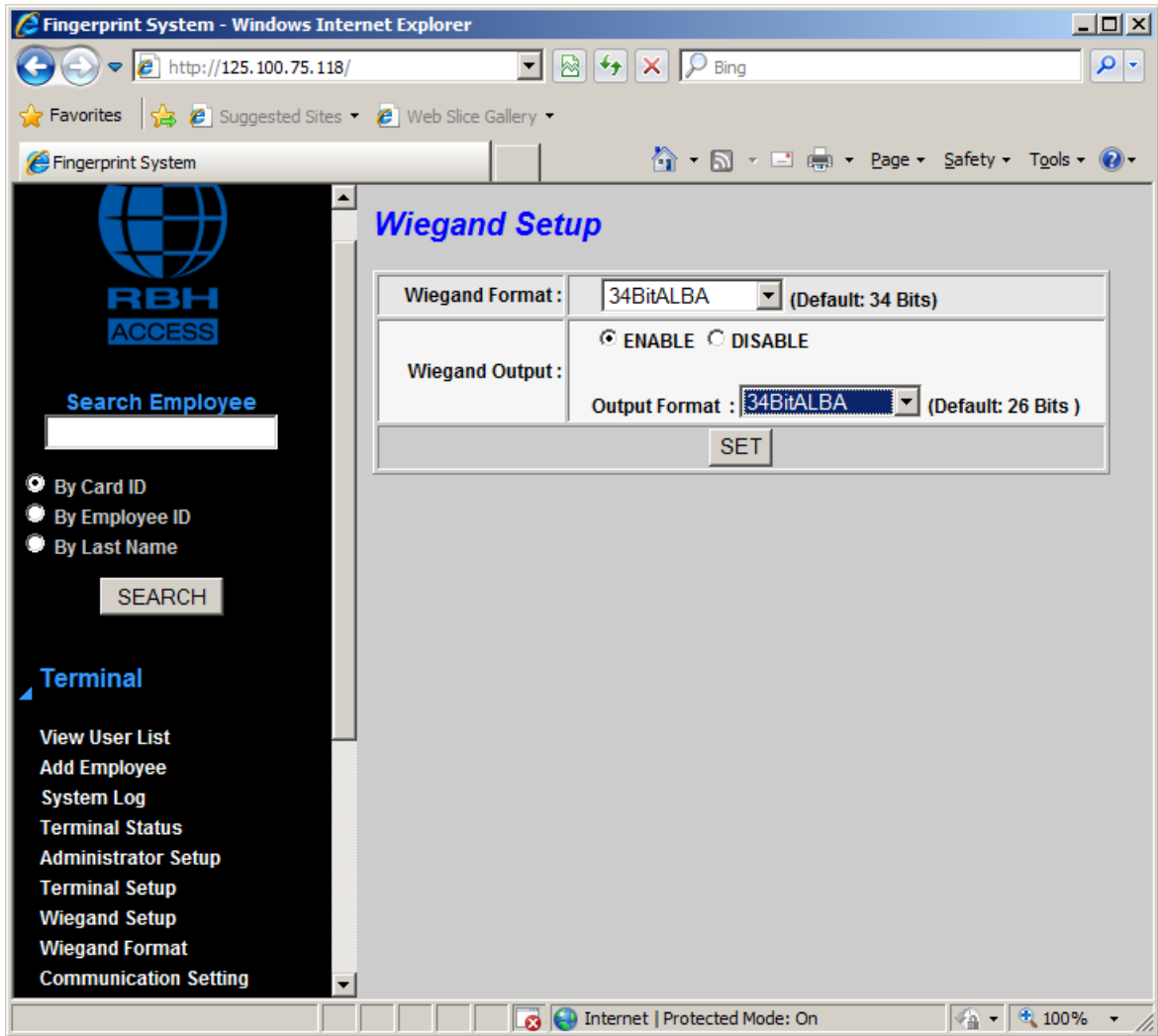


For a customize format, first need to configure the format in *Wiegand Format* window. Put in all the format information as shown below and click on *SET*.



The new format configured will now show in the list of formats in Weigand Setup window. Select the format and click on *SET*.





## Firmware Upgrade

If Firmware upgrade is required on BFR fingerprint unit, click on *Upgrade Firmware* on the web browser page.

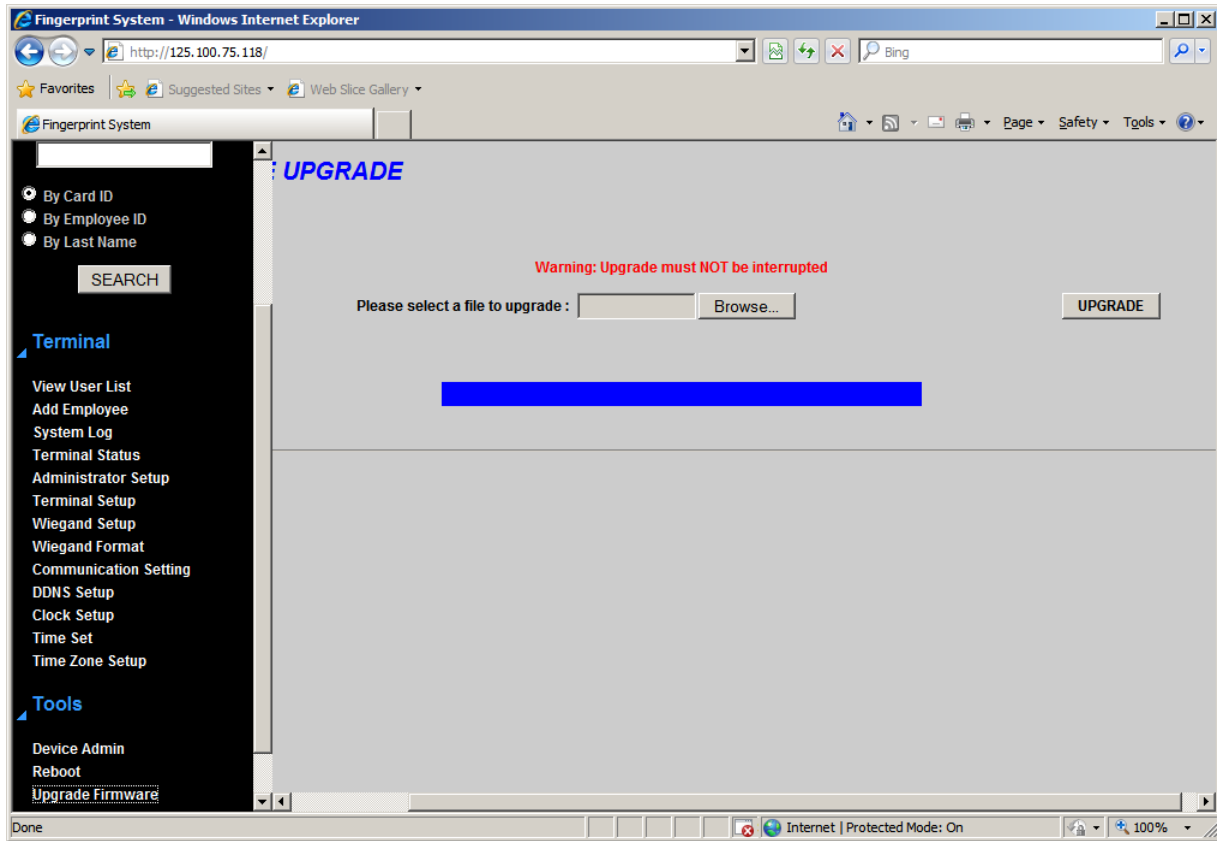
**System Status**

Product Name :	RBH-BFR-200S(HW1.2)
Firmware Version :	4.00.03, Feb 2 2012
System Time :	03/02/2012 09:19:15 GMT-05
Terminal ID :	1
Description :	RBH
Registered User :	3
Log Count :	132
Weigand Format :	Customize
Weigand Output :	Customize

**Ethernet Status**

MAC Address :	00:0e:e3:02:48:1f
IP Address :	125.100.75.118
Subnet mask :	255.255.255.0
Default Gateway :	125.100.75.1
Primary DNS :	168.95.1.1

Browse the upgrade file/files provided, (You may need to upgrade the Firmware on unit as well as Web browser) and click on *UPGRADE*.



For integration with AxiomV™ or Integra32™ see TB65\_BFRQuickConfigGuide on the CD.