



# RBH Technical Bulletin

2 Automatic Road, Suite 108  
Brampton, Ontario  
Canada L6S 6K8

## Integra 32™

**Number: 60**

**Integra 32™ Web Client**

### Integra32™ Web Client web application

**Integra32™ Web Client** is a web application developed on Visual Studio 2008 that will run on Microsoft IIS web server built in to Windows OS

## Pre-requisites and considerations

### Supported Operating Systems

Windows 7 Professional or Ultimate<sup>1</sup> (IIS 7.5)

Windows 8/8.1

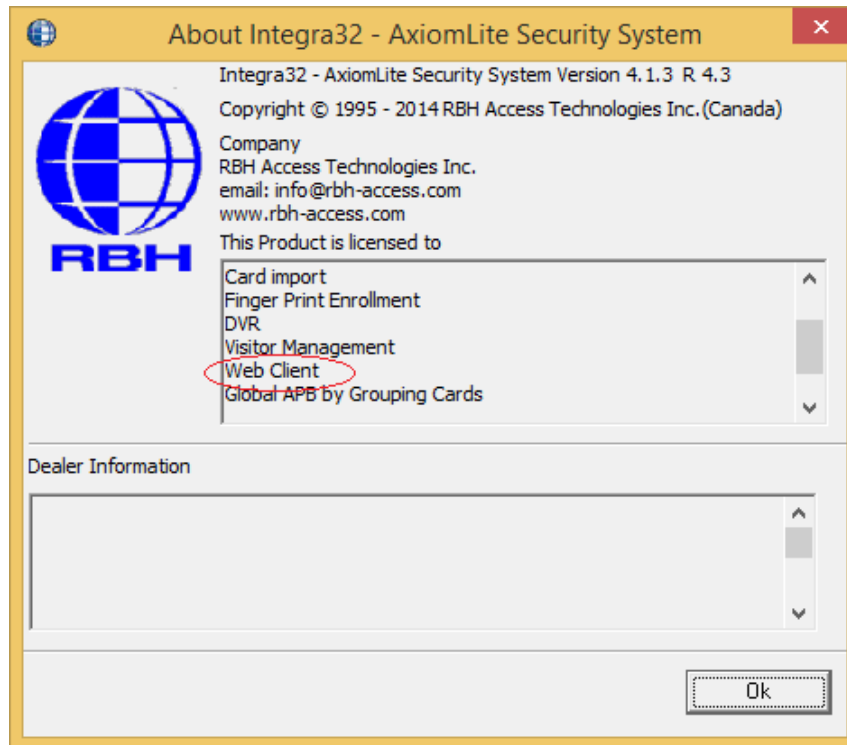
Windows Server 2008 (IIS 7)

Windows Server 2012

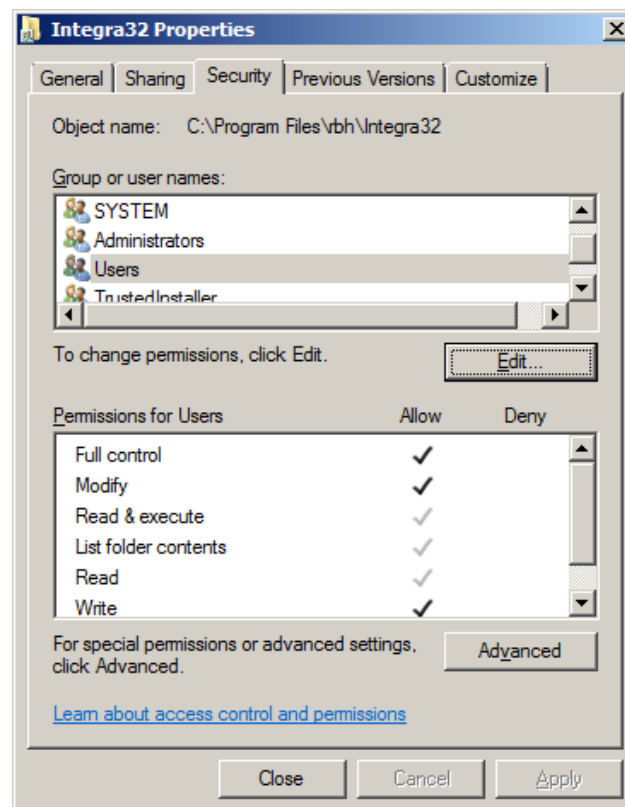
- Integra32™ must be updated to at least Service Pack 4C (Version 3.7.23+) for the Web Client to work properly.
- Integra32™ must be registered with an appropriate license file to enable Web services:

---

<sup>1</sup> Home Editions are not supported



- Share the Integra32 folder:

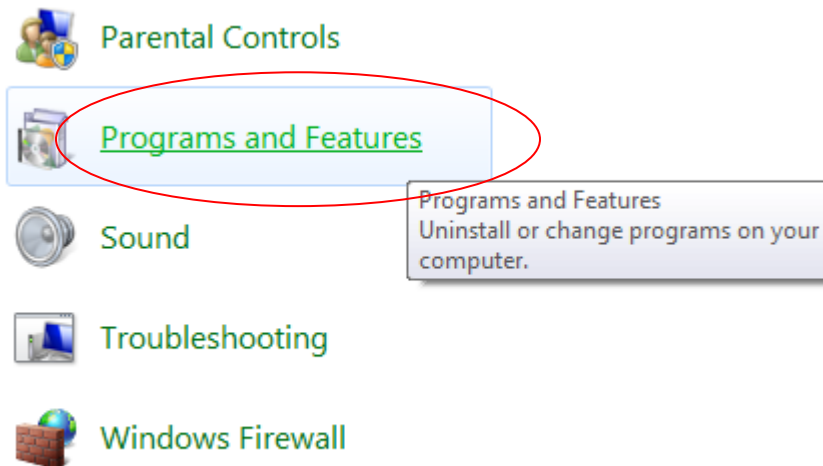


- NET Framework 3.5 is required. If it is not detected by the Web Client setup it will be installed automatically.
- Internet Information Services (IIS) is also required. If it is not detected the user will be notified.

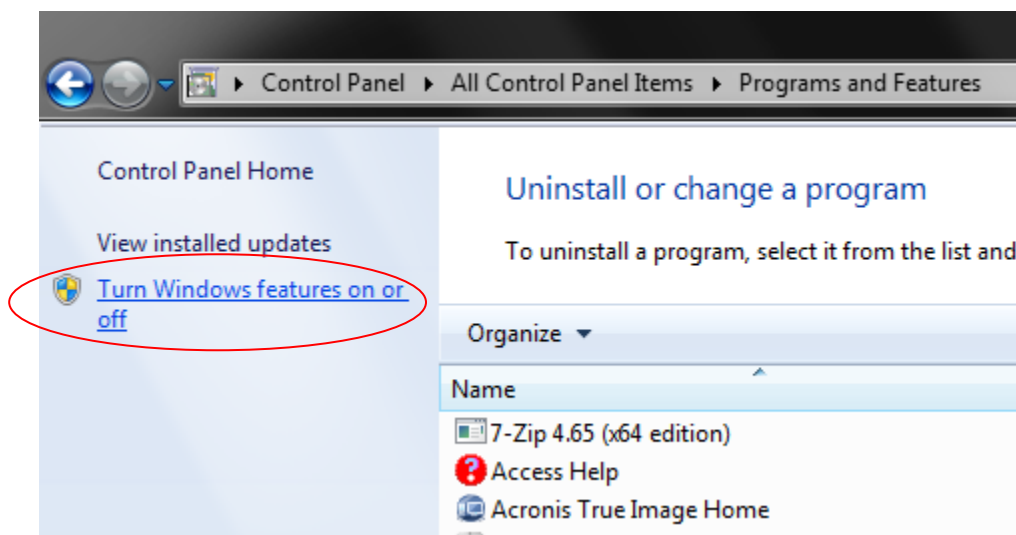
# Enable/Install IIS

## Windows 7

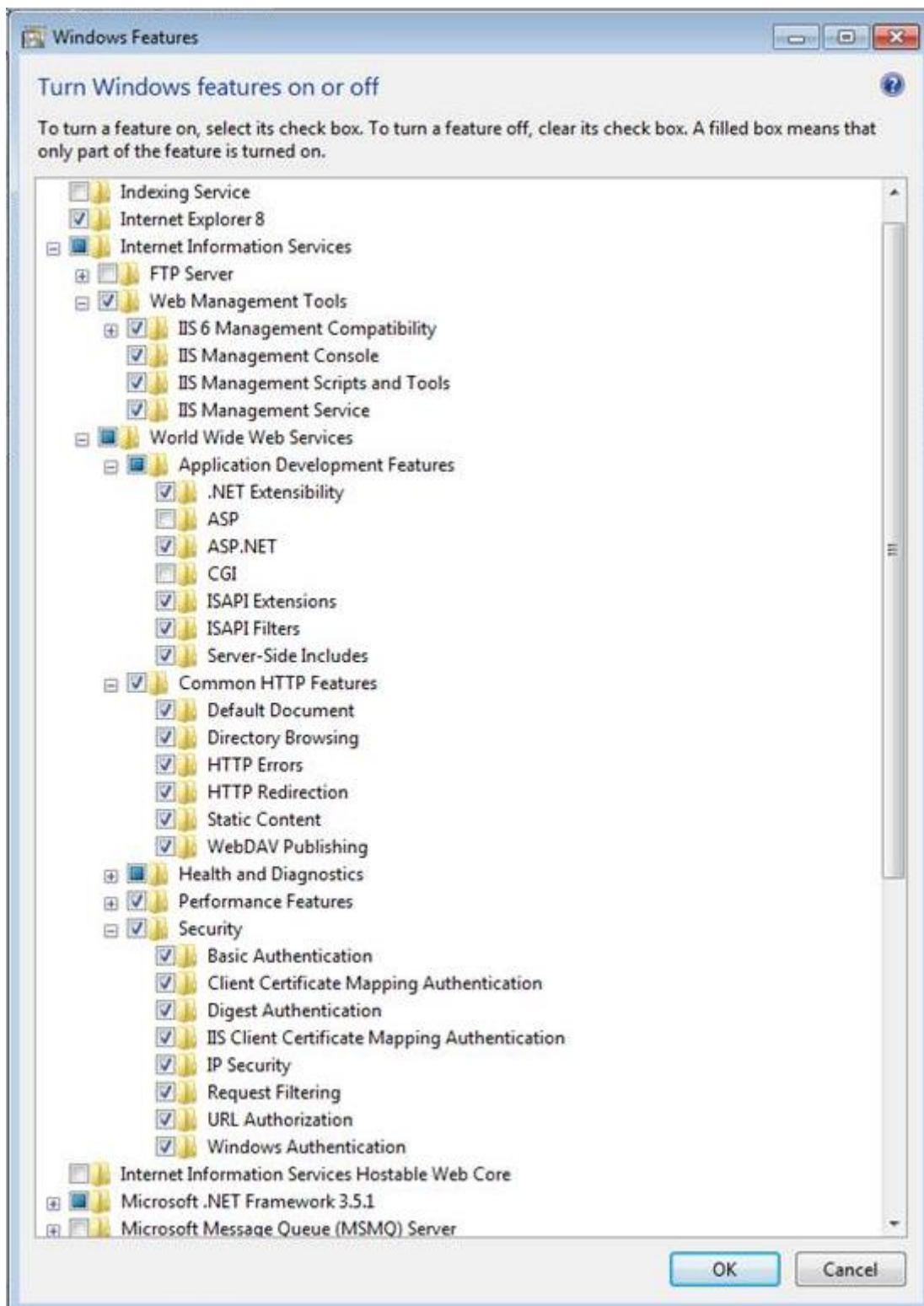
Go to *Control Panel* and Launch *Programs and Features*.



Select '*Turn Windows features on or off*'.

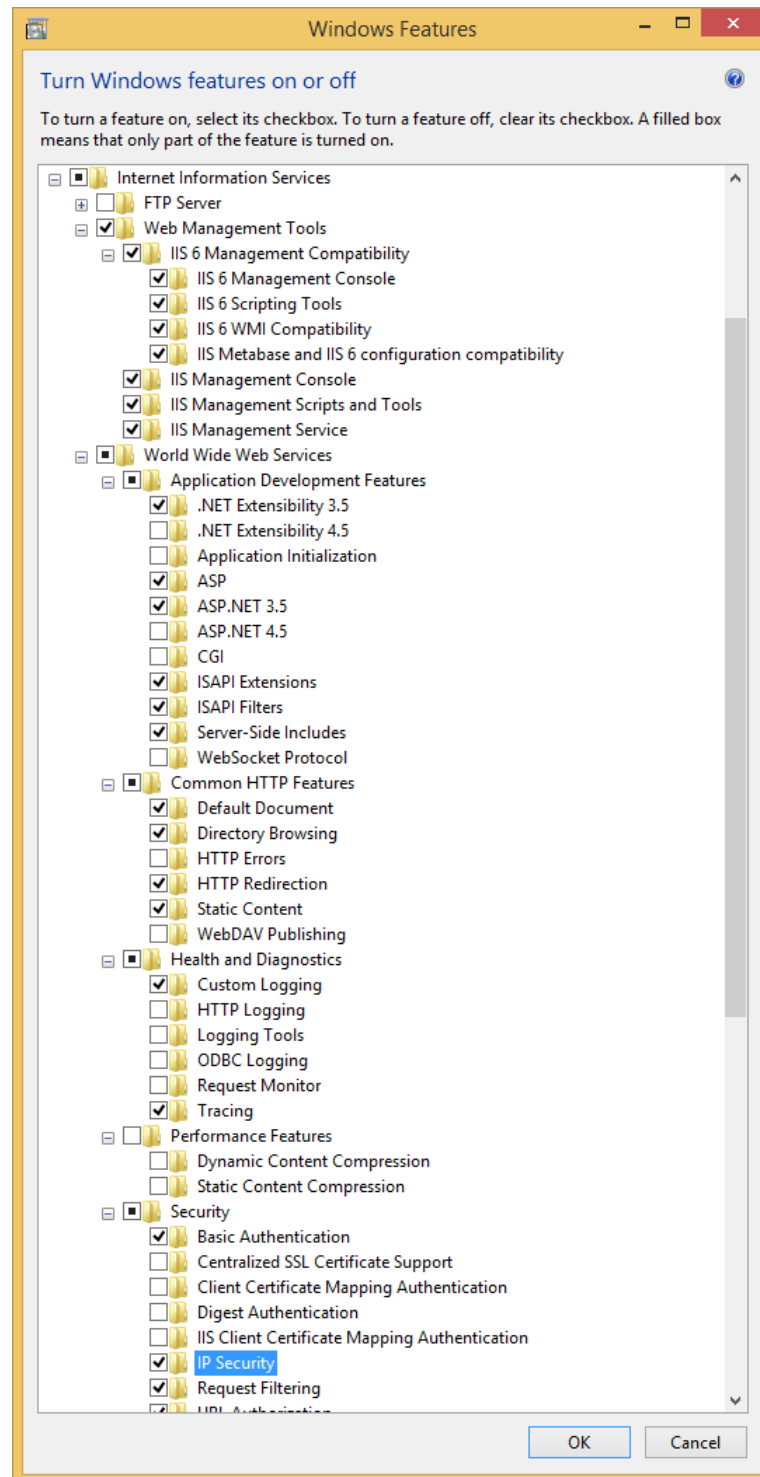


Then make the selection under *IIS (Internet Information Services)* as shown in the screen below:

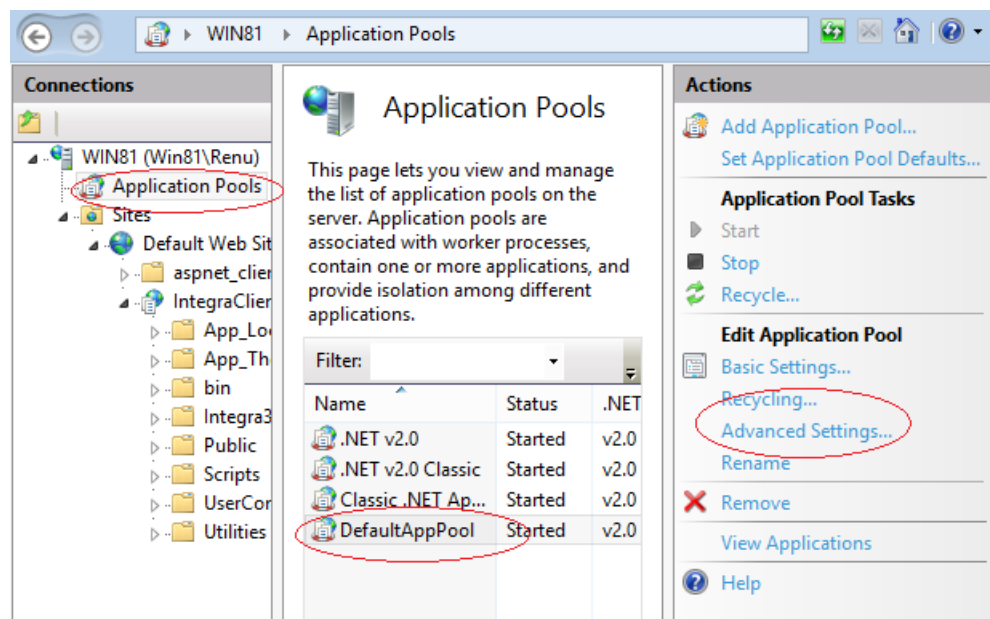


## Windows 8/8.1

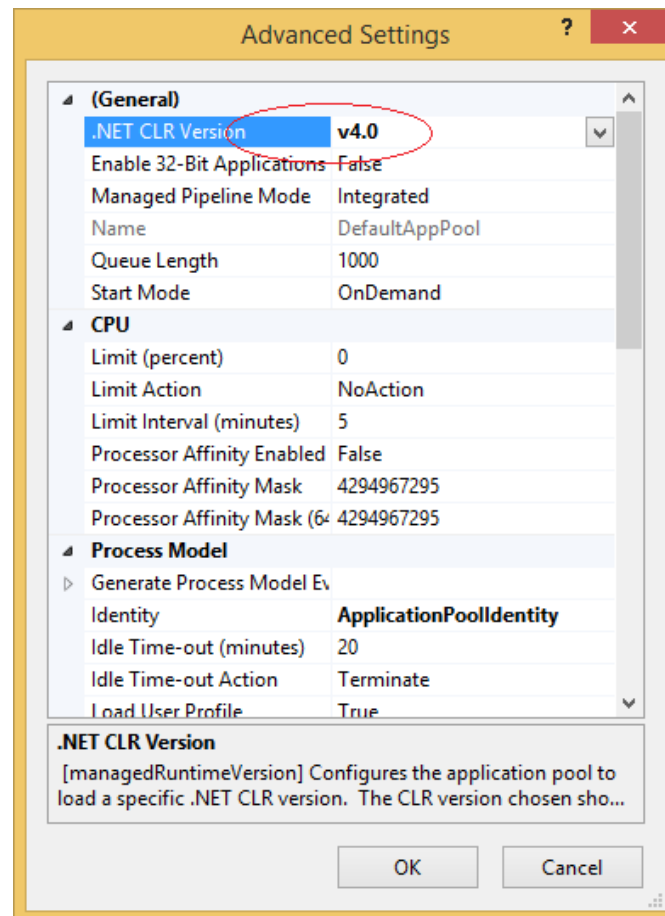
IIS setup in Windows 8/8.1 is similar to the IIS setup in Windows 7 - Through Programs and Features in Windows Control Panel.



Integra 32™ R4.3 is based on .NET Framework 4.5, and therefore, the DefaultAppPool would be .NET 4.0 for IIS where Integra 4.3 is installed. Since Integra Web Client is based on .NET Framework 3.5, after the installation of the Integra Web client application, the DefaultAppPool settings need to be changed.

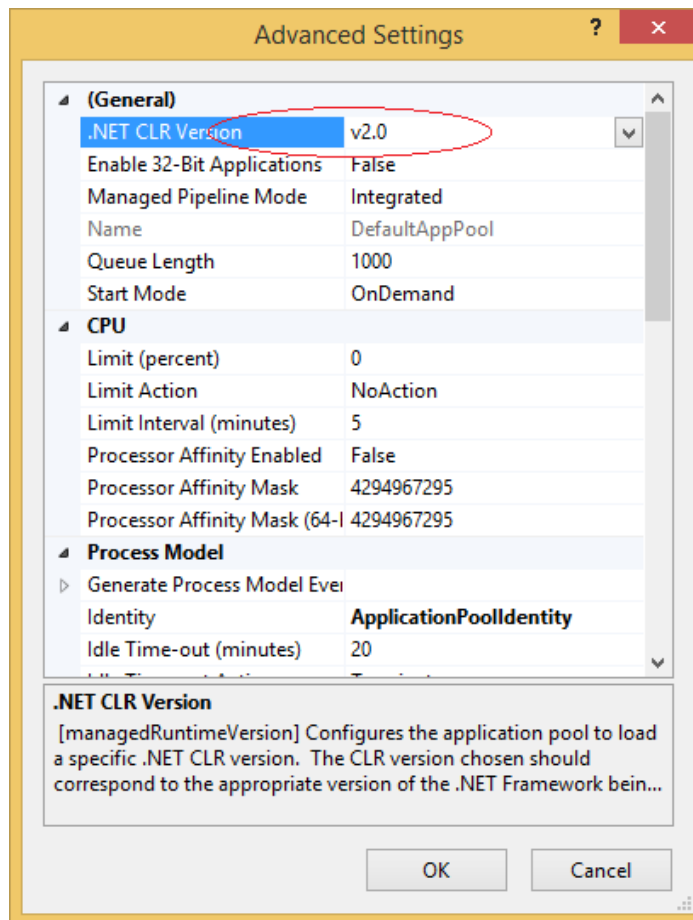


Click on Advanced Settings...for Default AppPool

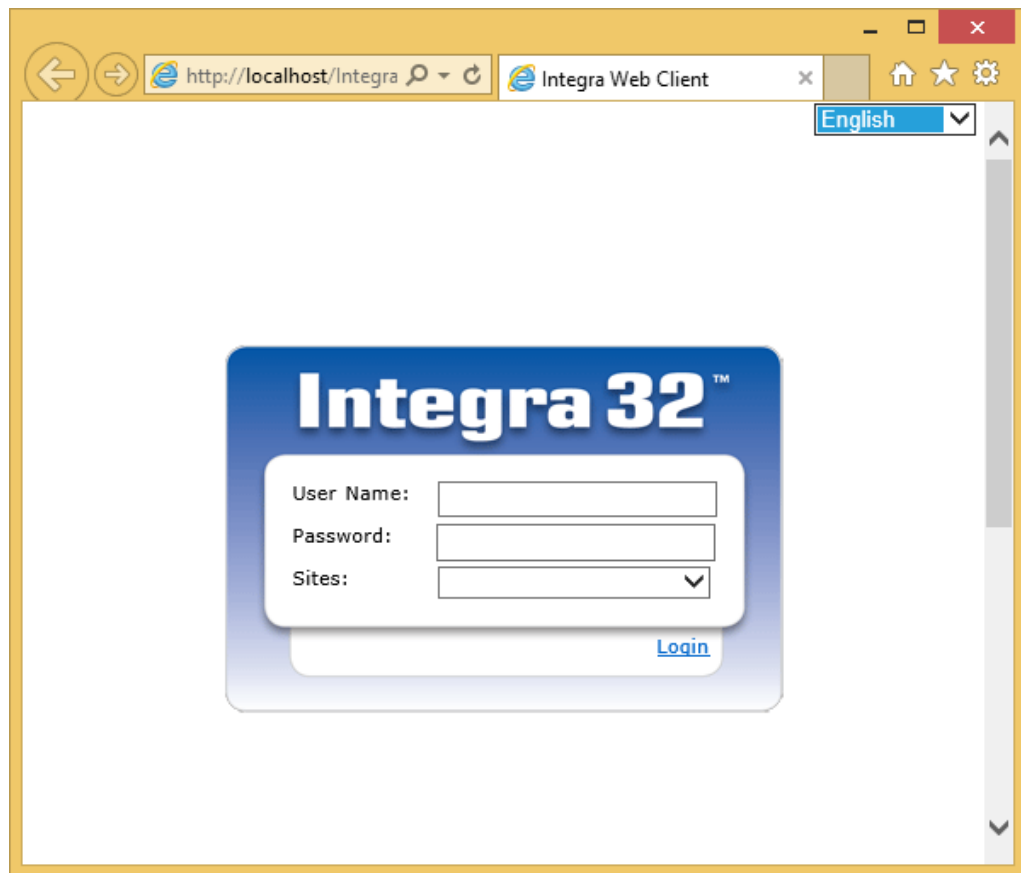


From the drop down menu, select V2.0 for .Net CLR version

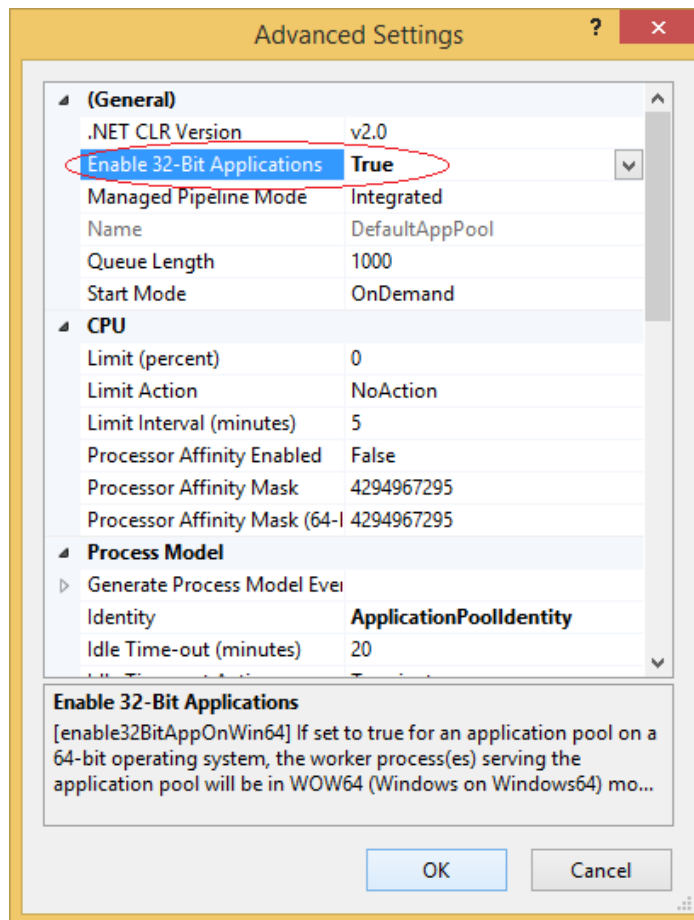




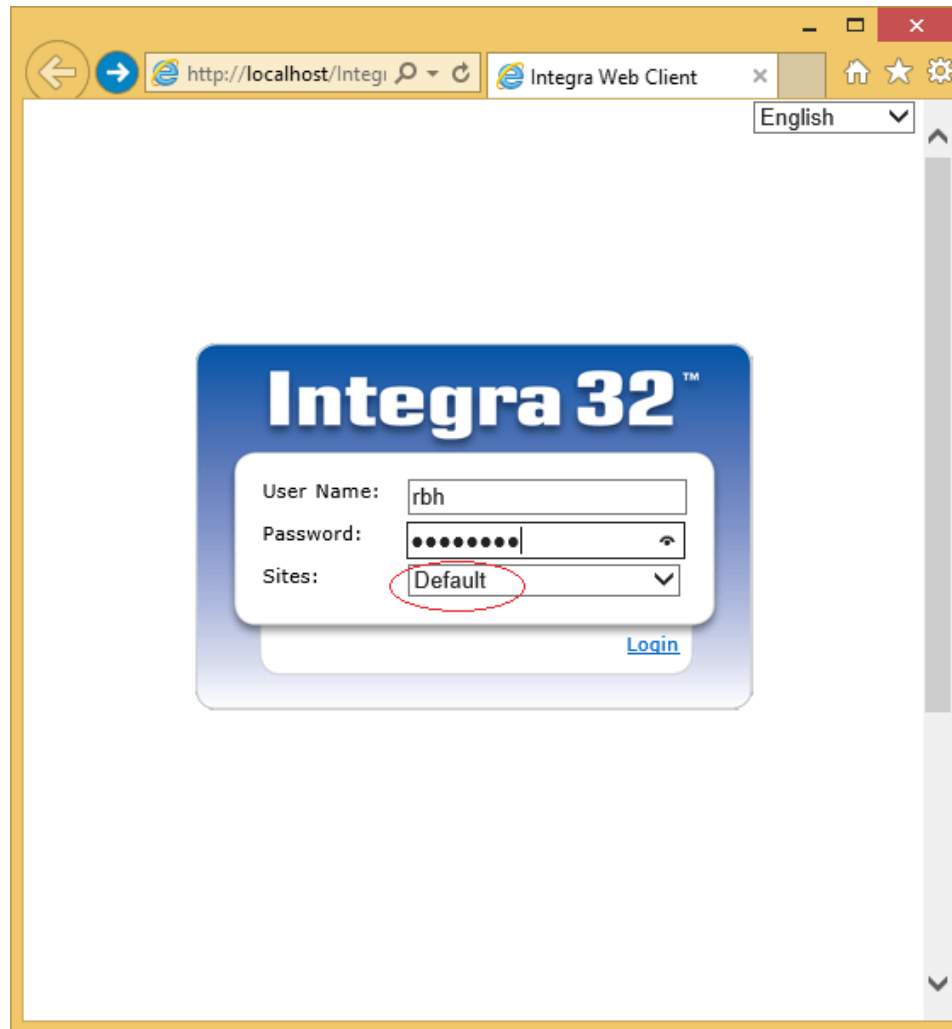
Restart the DefaultAppPool and browse to the Integra Web Client. You may see a Log in screen without any site name (especially if using a 64 bit OS)



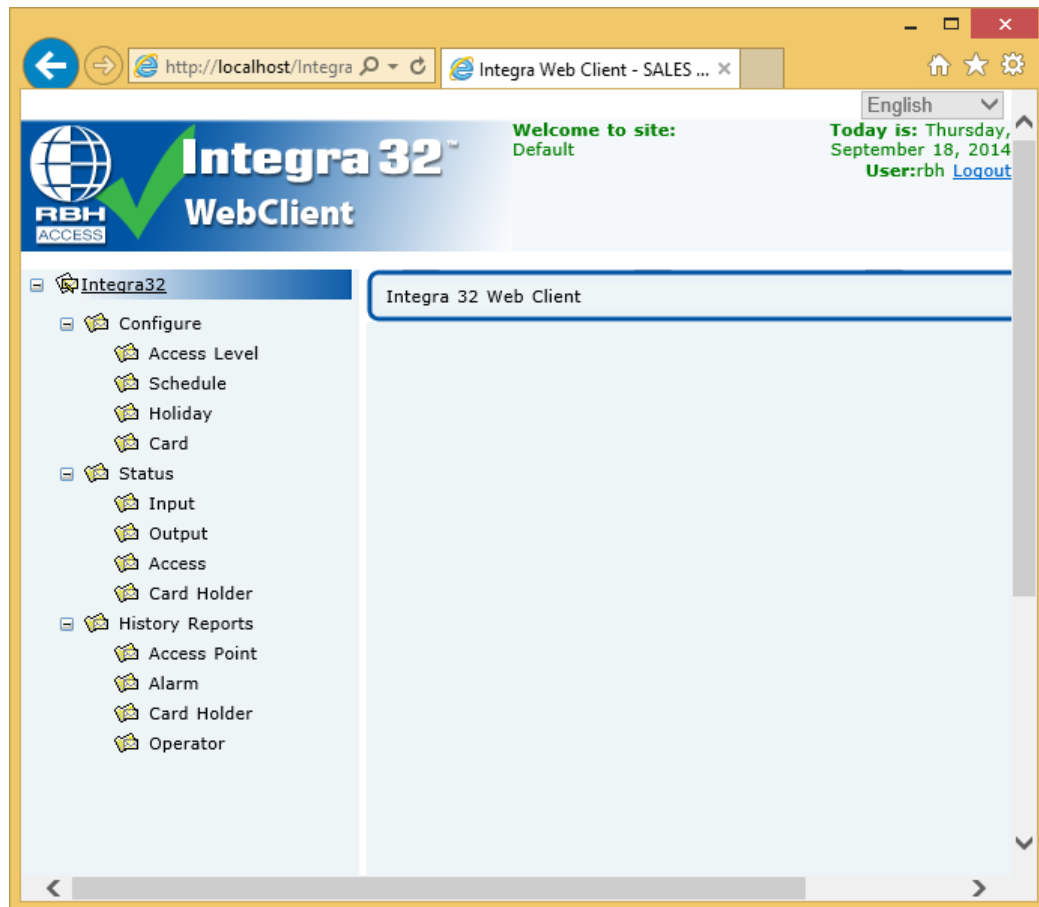
If your login screen does not show anything in the “Sites” field, you will need to change the setting for 32 bit application to “True” on the DefaultAppPool



Browse to the Integra Client 1.0 application again after restarting the DefaultAppPool



Log in to the Integra Web application



## Windows Server 2008/ Windows Server 2008 R2

### *Before You Begin*

Ensure that you have administrative user rights on the computer on which you plan to install IIS7.



**Note that by default, you do not have administrative user rights if you are logged on as a user other than the built-in administrator, even if you were added to the local Administrators group on the computer (this is a new security feature in Windows Server 2008 called *Local User Administrator*).**



**Log on either to the built-in administrator account, or explicitly invoke applications as the built-in administrator by using the 'run as' on the right click menu for the application.**

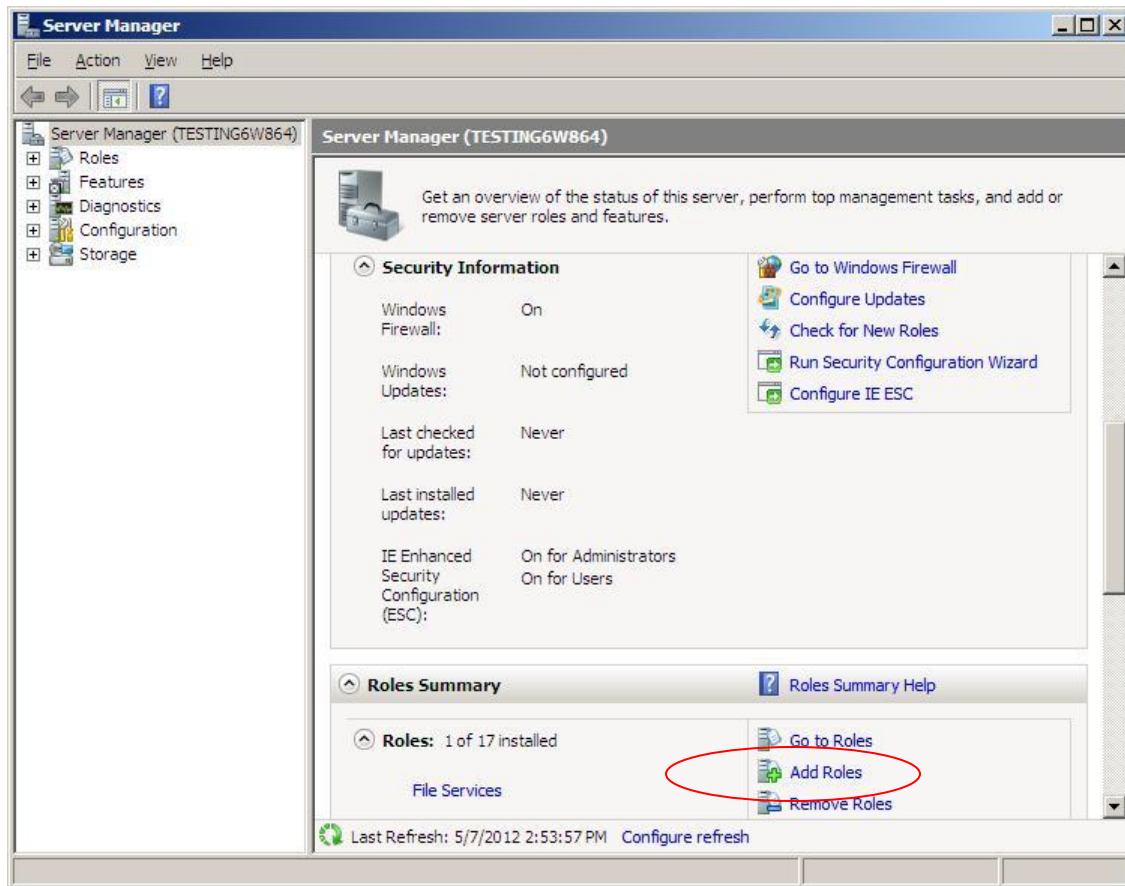
If you are logged on to an account other than the built-in local administrator account, you may see the following security alert dialog box.



IIS is one of the Windows Server's server roles. IIS 7 can be installed through the graphical user interface (GUI) by using the new *Server Manager* interface after the Windows Server operating system is installed.

*Server Manager* provides a single dashboard to install or uninstall server roles and features. *Server Manager* also gives an overview of all currently installed roles and features. When IIS 7 is chosen from the *Server Manager*, the basic components and services needed for IIS are automatically selected.

*Click Start -> All Programs -> Administrative Tools -> Server Manager*



In the *Server Manager* window, scroll down to *Roles Summary*, and then click *Add Roles*.

The *Add Roles Wizard* will start with a *Before You Begin* page. The wizard asks for verification of the following:

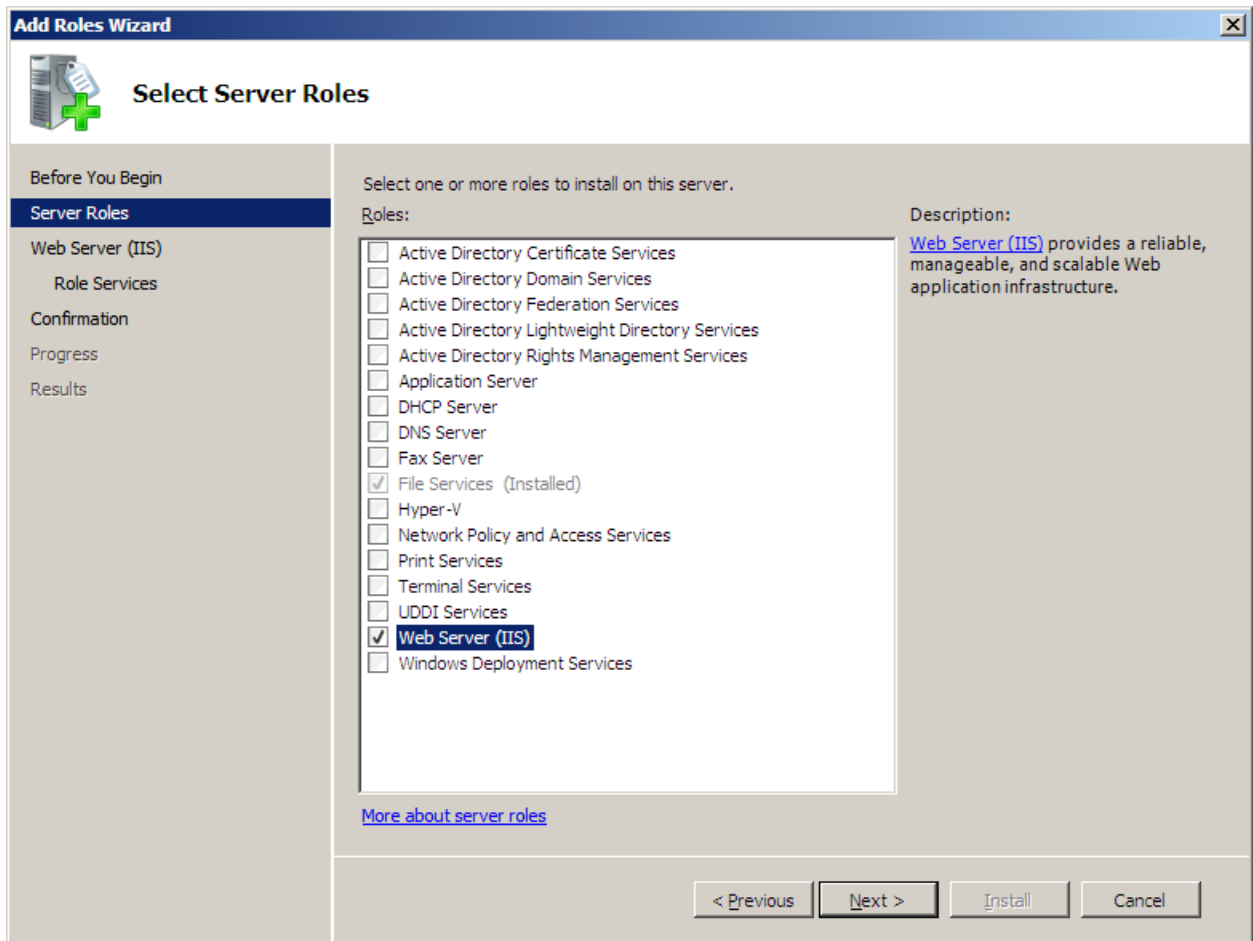
- The administrator account has a strong password.
- The network settings, such as IP addresses, are configured.
- The latest security updates from Windows Update are installed.

Select *Web Server (IIS)* on the *Select Server Roles* page.

An introductory page will open with links for further information.

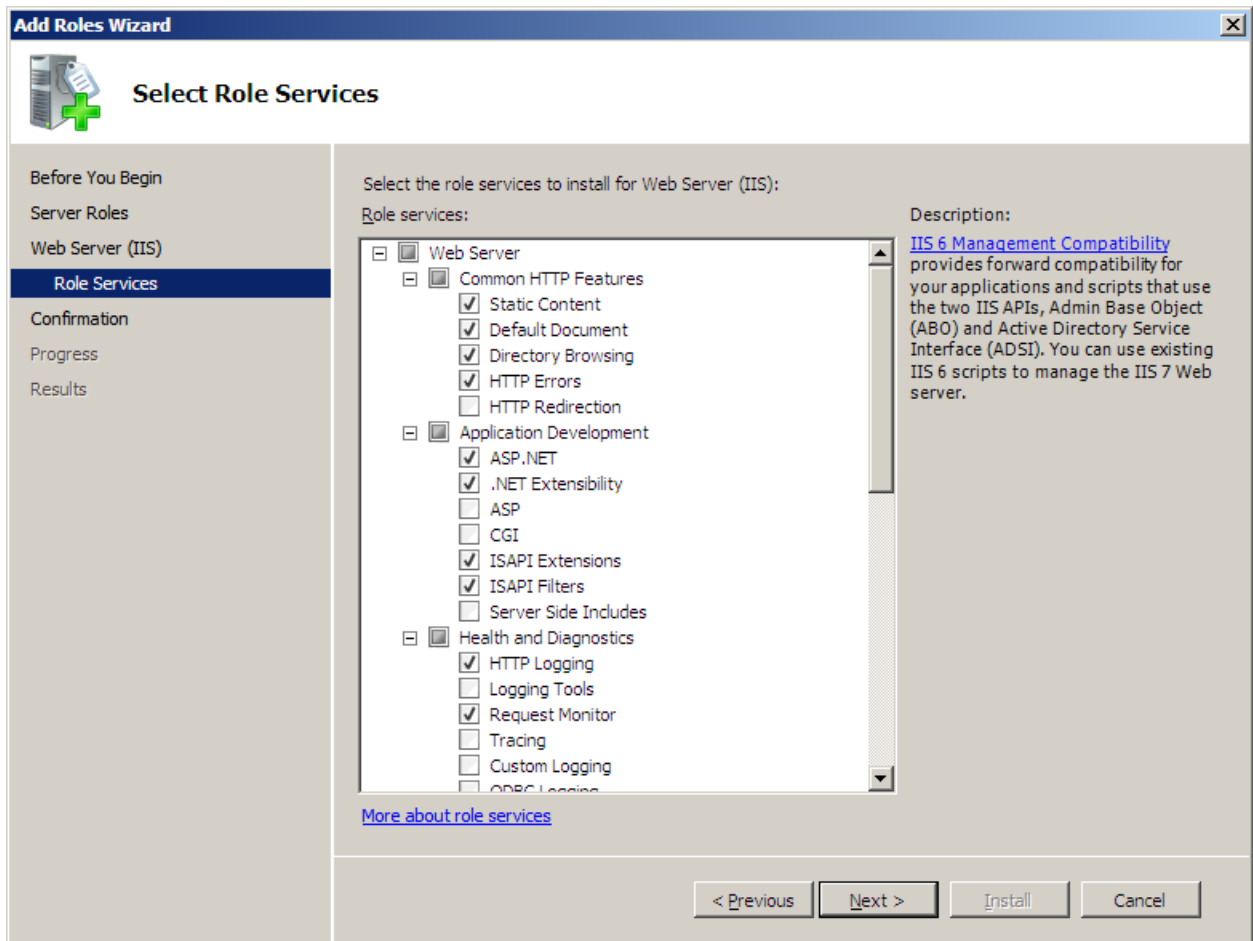


**When you use the Add Roles Wizard to install IIS, you get the default installation, which has a minimum set of role services. If you need additional IIS role services, such as Application Development or Health and Diagnostics, make sure to select the check boxes associated with those features in the Select Role Services page of the wizard.**

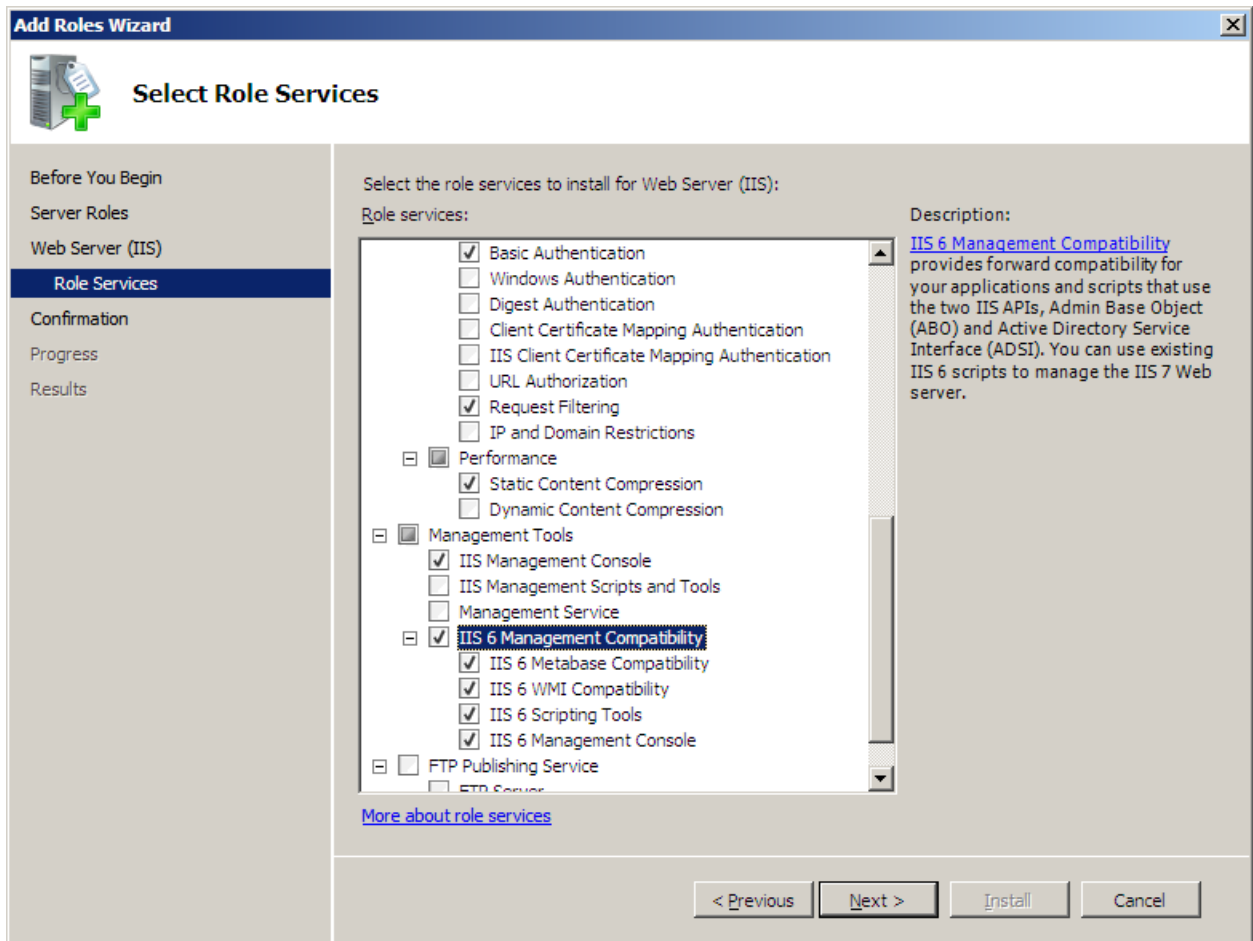


Select the IIS services to be installed on the Select *Role Services* page. Add only the modules necessary. In this case, ASP.NET is selected, and a description of ASP.NET appears in the right pane. Once desired modules are added (as shown in the screen below), click *Next*.

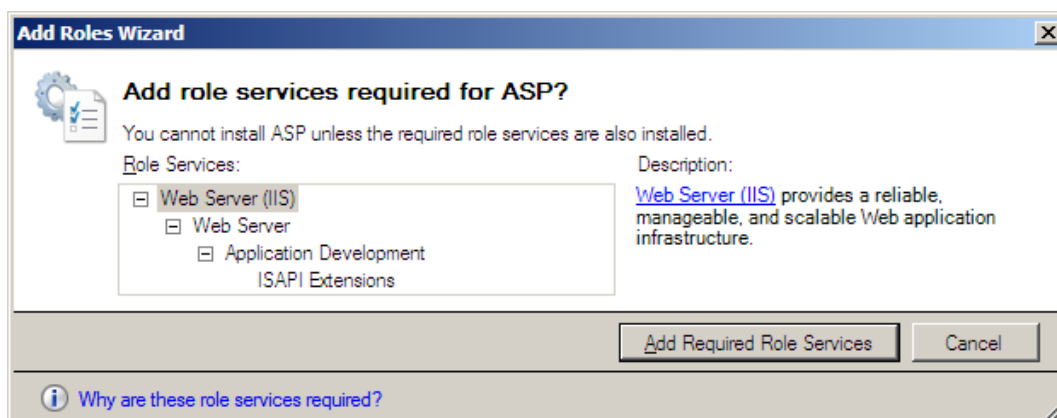




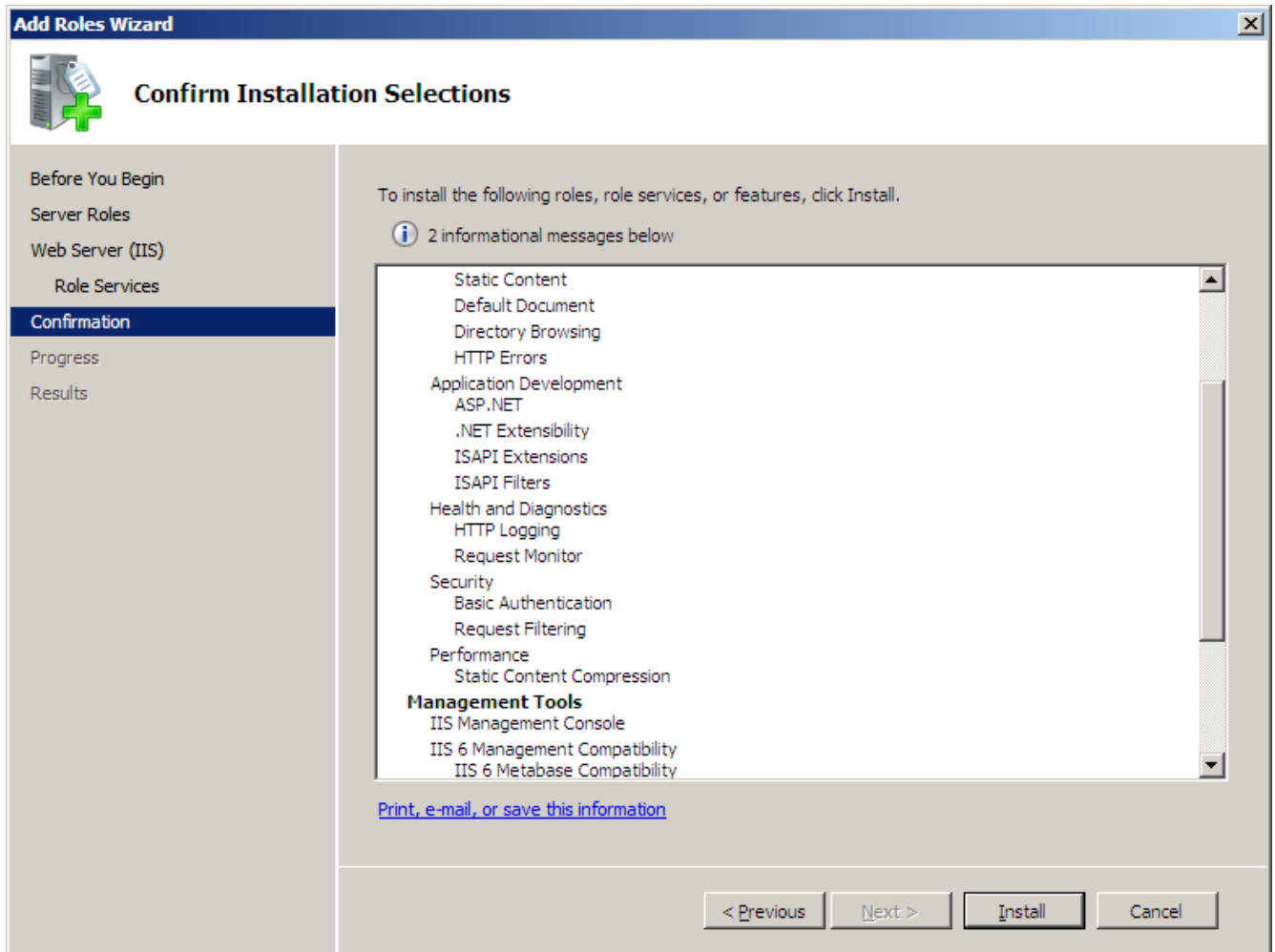
And

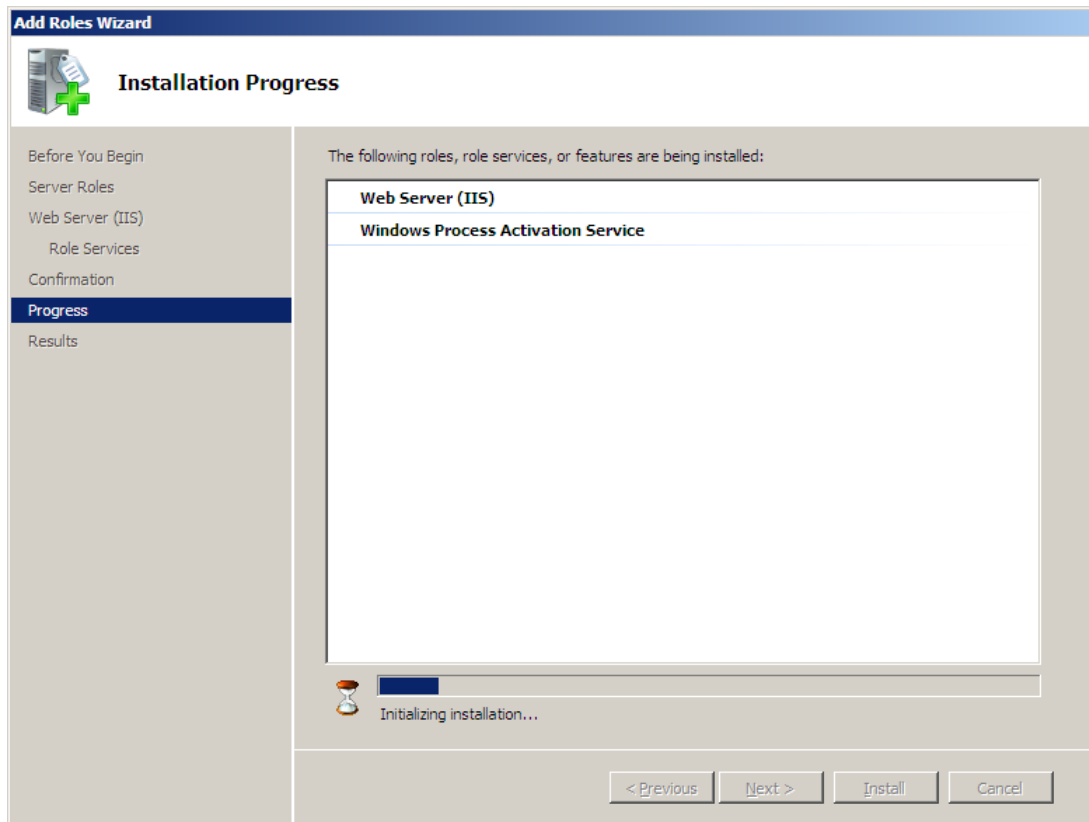


Add any required role services.

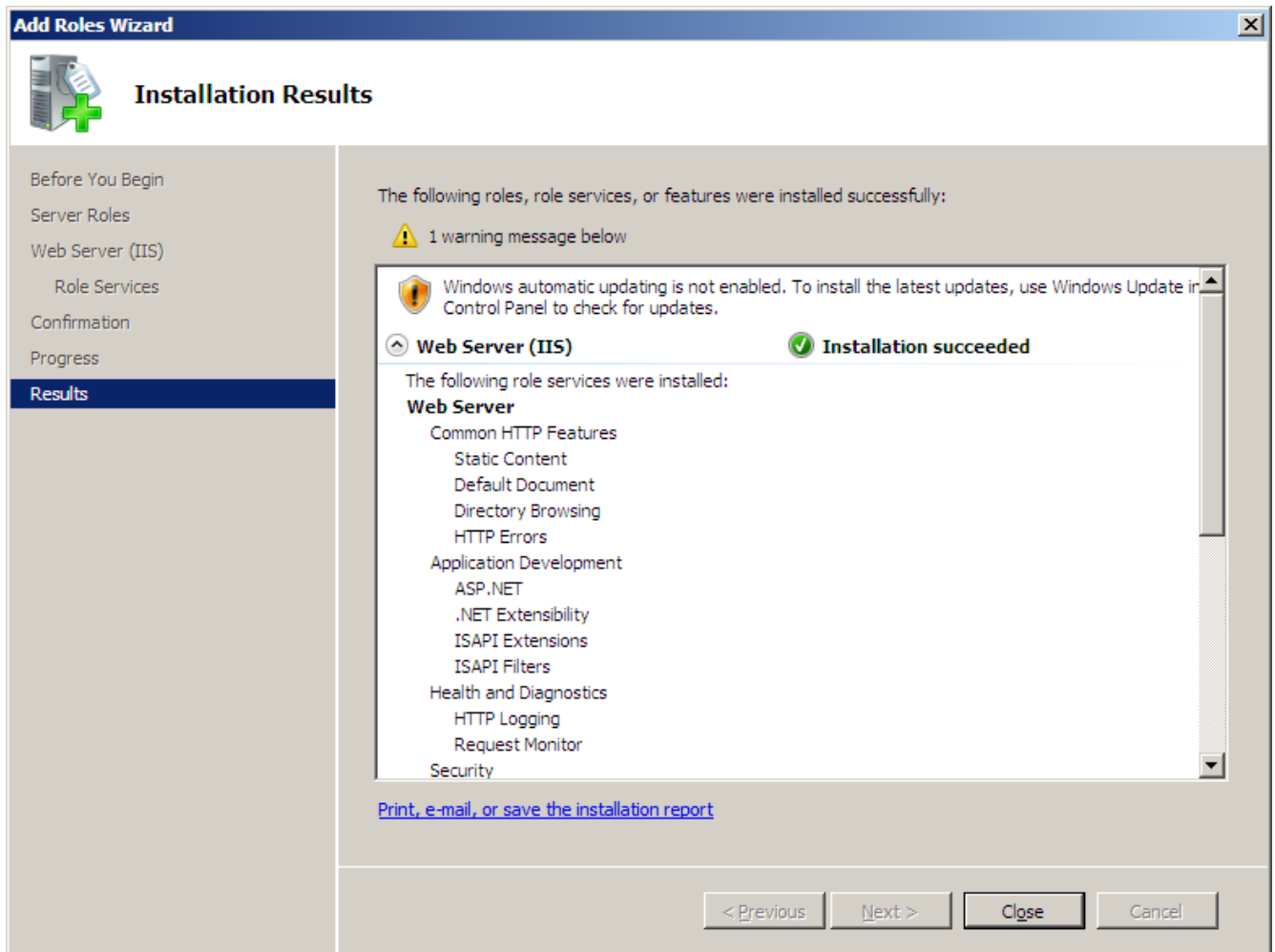


Click Install to install the Role selected





IIS is now installing with a default configuration for hosting ASP.NET on Windows Server. Once finished, click Close to complete the process.

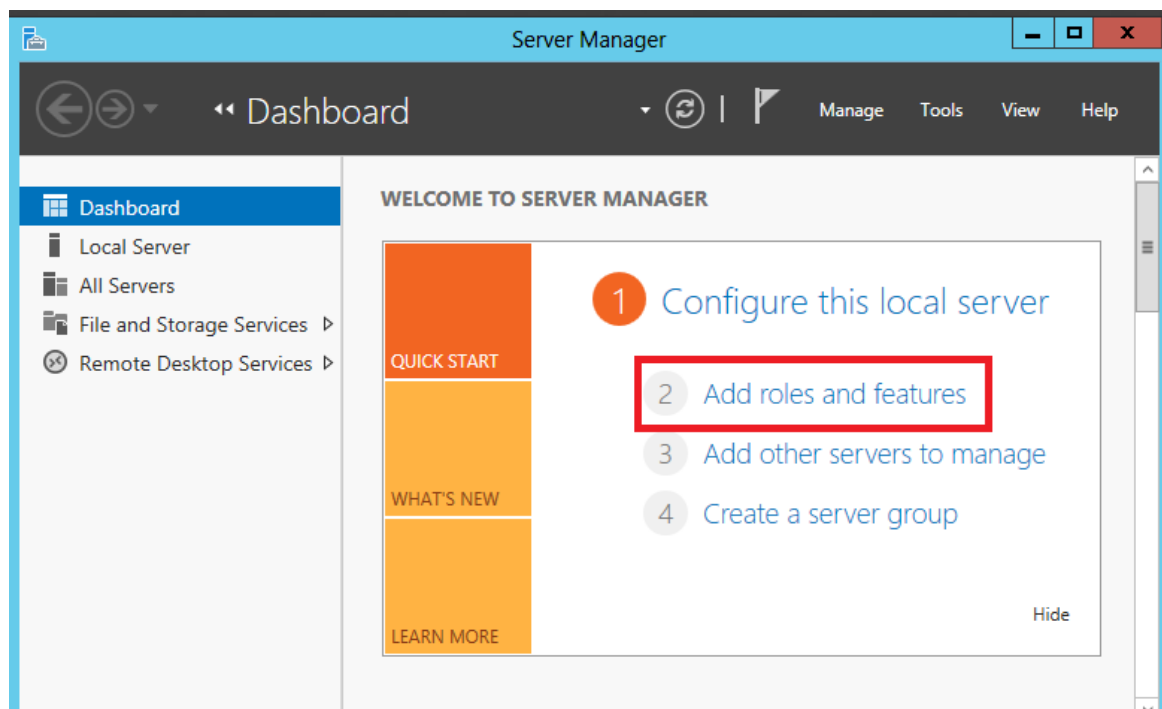


Confirm that the Web Server works by using `http://localhost`.



## Windows Server 2012

IIS setup for Windows Server 2012 is very similar to the IIS setup for Windows Server 2008. Following screenshots for Windows Server 2012 are self explanatory.



The screenshot shows the 'Add Roles and Features Wizard' window. The title bar is blue with the text 'Add Roles and Features Wizard' and standard window controls. The main area has a light blue header with 'Before you begin' on the left and 'DESTINATION SERVER WS2012' on the right. A left sidebar contains a list of steps: 'Before You Begin' (highlighted), 'Installation Type', 'Server Selection', 'Server Roles', 'Features', 'Confirmation', and 'Results'. The main content area explains the wizard's purpose and lists prerequisites: Administrator account password, network settings, and security updates. A 'Next >' button is highlighted with a red box.

**Add Roles and Features Wizard**

DESTINATION SERVER  
WS2012

**Before you begin**

This wizard helps you install roles, role services, or features. You determine which roles, role services, or features to install based on the computing needs of your organization, such as sharing documents, or hosting a website.

To remove roles, role services, or features:  
[Start the Remove Roles and Features Wizard](#)

Before you continue, verify that the following tasks have been completed:

- The Administrator account has a strong password
- Network settings, such as static IP addresses, are configured
- The most current security updates from Windows Update are installed

If you must verify that any of the preceding prerequisites have been completed, close the wizard, complete the steps, and then run the wizard again.

To continue, click Next.

☐ Skip this page by default

< Previous **Next >** Install Cancel

The screenshot shows the 'Add Roles and Features Wizard' window at the 'Select installation type' step. The title bar is blue with the text 'Add Roles and Features Wizard' and standard window controls. The main area has a light blue header with 'Select installation type' on the left and 'DESTINATION SERVER WS2012' on the right. A left sidebar contains a list of steps: 'Before You Begin', 'Installation Type' (highlighted), 'Server Selection', 'Server Roles', 'Features', 'Confirmation', and 'Results'. The main content area explains the installation types: 'Role-based or feature-based installation' (selected) and 'Remote Desktop Services installation'. A 'Next >' button is highlighted with a red box.

**Add Roles and Features Wizard**

DESTINATION SERVER  
WS2012

**Select installation type**

Select the installation type. You can install roles and features on a running physical computer or virtual machine, or on an offline virtual hard disk (VHD).

- ☒ **Role-based or feature-based installation**  
Configure a single server by adding roles, role services, and features.
- ☐ **Remote Desktop Services installation**  
Install required role services for Virtual Desktop Infrastructure (VDI) to create a virtual machine-based or session-based desktop deployment.

< Previous **Next >** Install Cancel

**Add Roles and Features Wizard**

Select destination server

DESTINATION SERVER  
WS2012

Before You Begin  
Installation Type  
**Server Selection**  
Server Roles  
Features  
Confirmation  
Results

Select a server or a virtual hard disk on which to install roles and features.

☒ Select a server from the server pool  
☐ Select a virtual hard disk

Server Pool

Filter:

Name	IP Address	Operating System
WS2012	125.100.75.206	Microsoft Windows Server 2012 Standard

1 Computer(s) found

This page shows servers that are running Windows Server 2012, and that have been added by using the Add Servers command in Server Manager. Offline servers and newly-added servers from which data collection is still incomplete are not shown.

< Previous **Next >** Install Cancel

**Add Roles and Features Wizard**

Select server roles

DESTINATION SERVER  
WS2012

Before You Begin  
Installation Type  
Server Selection  
**Server Roles**  
Features  
Confirmation  
Results

Select one or more roles to install on the selected server.

Roles

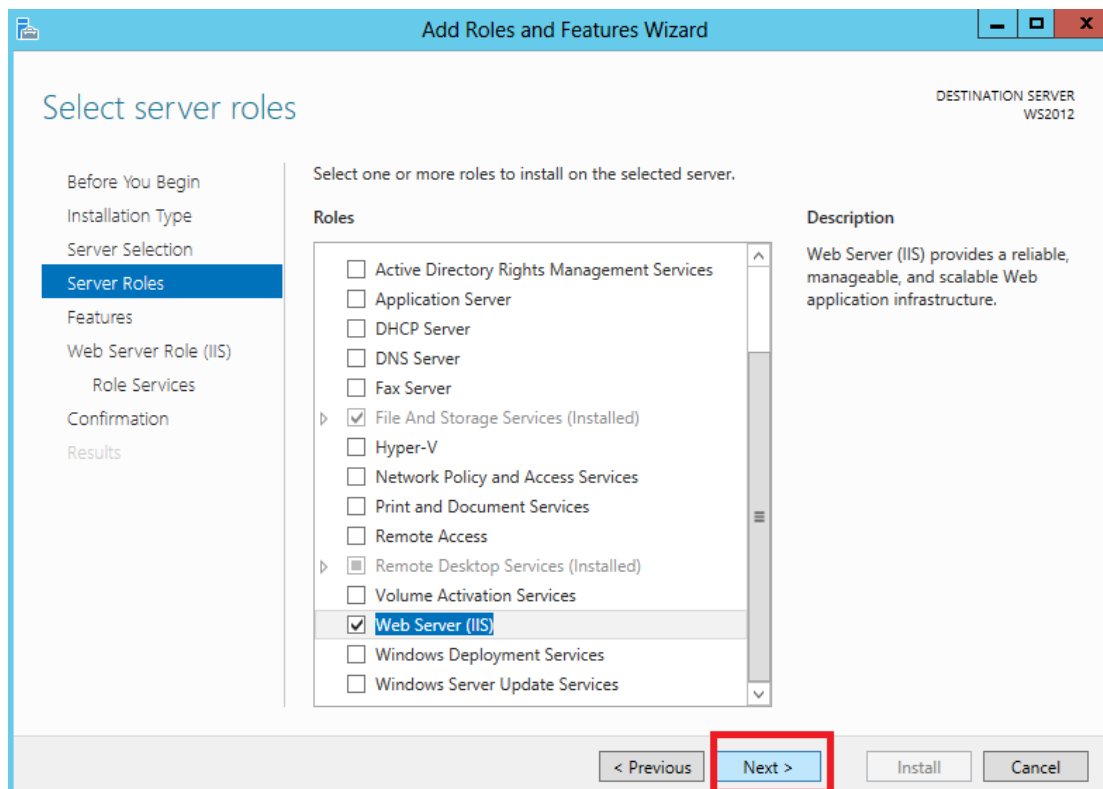
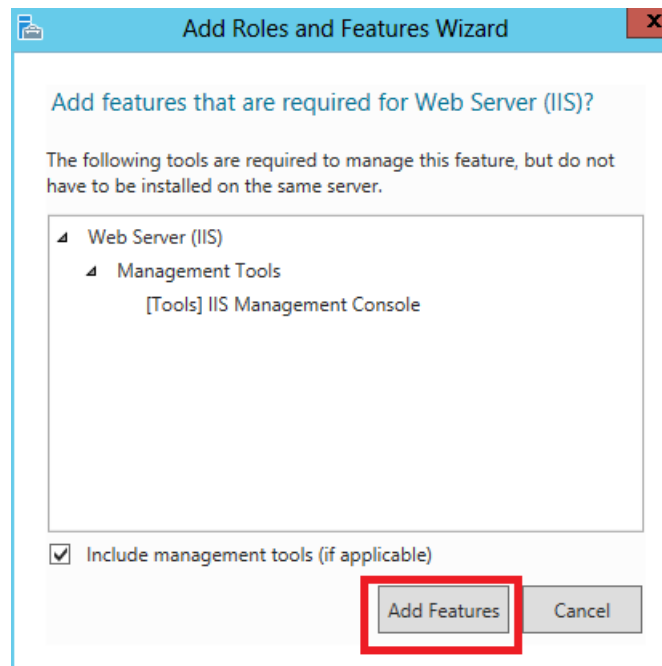
- ☐ Active Directory Rights Management Services
- ☐ Application Server
- ☐ DHCP Server
- ☐ DNS Server
- ☐ Fax Server
- ☒ File And Storage Services (Installed)
- ☐ Hyper-V
- ☐ Network Policy and Access Services
- ☐ Print and Document Services
- ☐ Remote Access
- ☒ Remote Desktop Services (Installed)
- ☐ Volume Activation Services
- ☐ **Web Server (IIS)**
- ☐ Windows Deployment Services
- ☐ Windows Server Update Services

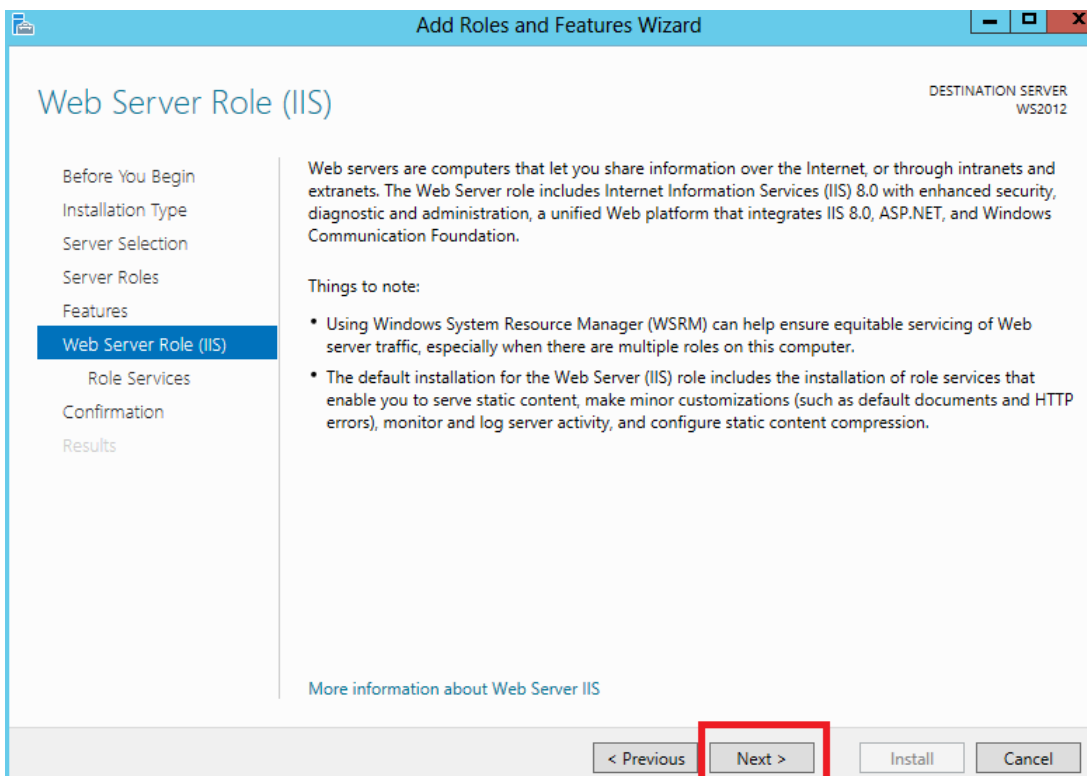
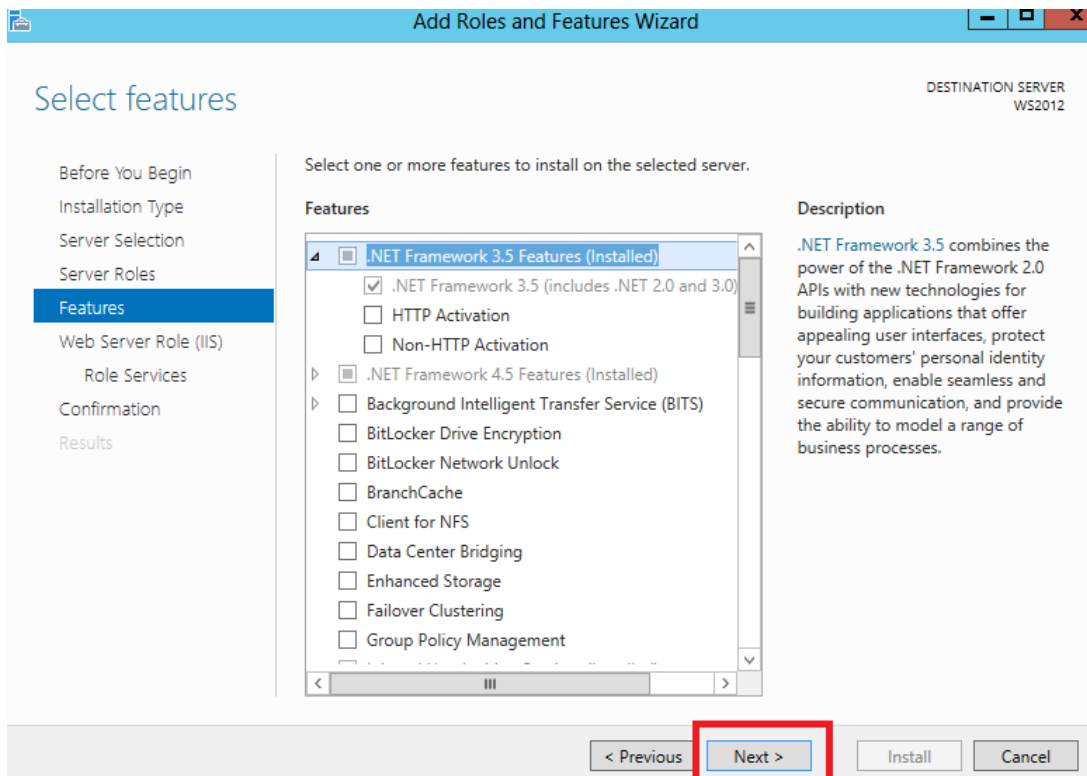
Description

Active Directory Certificate Services (AD CS) is used to create certification authorities and related role services that allow you to issue and manage certificates used in a variety of applications.

< Previous **Next >** Install Cancel







## Select role services

Destination Server  
WS2012

Before You Begin

Installation Type

Server Selection

Server Roles

Features

Web Server Role (IIS)

**Role Services**

Confirmation

Results

Select the role services to install for Web Server (IIS)

## Role services

- ☒ Web Server
  - ☒ Common HTTP Features
    - ☒ Default Document
    - ☒ Directory Browsing
    - ☒ HTTP Errors
    - ☒ Static Content
    - ☒ HTTP Redirection
    - ☐ WebDAV Publishing
  - ☒ Health and Diagnostics
    - ☒ HTTP Logging
    - ☒ Custom Logging
    - ☒ Logging Tools
    - ☒ ODBC Logging
    - ☒ Request Monitor
    - ☒ Tracing
  - ☒ Performance
    - ☒ Static Content Compression
    - ☒ Dynamic Content Compression
  - ☒ Security
    - ☒ Request Filtering
    - ☒ Basic Authentication
    - ☐ Centralized SSL Certificate Support
    - ☒ Client Certificate Mapping Authentication
    - ☒ Digest Authentication
    - ☒ IIS Client Certificate Mapping Authentication
    - ☒ IP and Domain Restrictions
    - ☐ URL Authorization
    - ☐ Windows Authentication
  - ☒ Application Development
    - ☒ .NET Extensibility 3.5
    - ☐ ASP.NET 4.5

## Description

Management Service allows the Web server to be managed remotely from another computer using IIS Manager.

&lt; Previous

Next &gt;

Install

Cancel

Before You Begin  
Installation Type  
Server Selection  
Server Roles  
Features  
Web Server Role (IIS)  
**Role Services**  
Confirmation  
Results

Select the role services to install for Web Server (IIS)

**Role services**

- ☒ Security
  - ☒ Request Filtering
  - ☒ Basic Authentication
  - ☐ Centralized SSL Certificate Support
  - ☒ Client Certificate Mapping Authentication
  - ☒ Digest Authentication
  - ☒ IIS Client Certificate Mapping Authentication
  - ☒ IP and Domain Restrictions
  - ☐ URL Authorization
  - ☐ Windows Authentication
- ☒ Application Development
  - ☒ .NET Extensibility 3.5
  - ☐ .NET Extensibility 4.5
  - ☐ Application Initialization
  - ☒ ASP
  - ☒ ASP.NET 3.5
  - ☐ ASP.NET 4.5
  - ☐ CGI
  - ☒ ISAPI Extensions
  - ☒ ISAPI Filters
  - ☒ Server Side Includes
  - ☐ WebSocket Protocol
- ☒ FTP Server
  - ☒ FTP Service
  - ☒ FTP Extensibility
  - ☐ IIS Hostable Web Core
- ☒ Management Tools
  - ☒ IIS Management Console
  - ☒ IIS 6 Management Compatibility
  - ☒ IIS Management Scripts and Tools
  - ☒ **Management Service**

**Description**

Management Service allows the Web server to be managed remotely from another computer using IIS Manager.

< Previous **Next >** Install Cancel

## Confirm installation selections

Before You Begin  
Installation Type  
Server Selection  
Server Roles  
Features  
Web Server Role (IIS)  
Role Services  
**Confirmation**  
Results

To install the following roles, role services, or features on selected server, click Install.

☐ Restart the destination server automatically if required

Optional features (such as administration tools) might be displayed on this page because they have been selected automatically. If you do not want to install these optional features, click Previous to clear their check boxes.

.NET Framework 4.5 Features

ASP.NET 4.5

Web Server (IIS)

FTP Server

FTP Extensibility

FTP Service

Management Tools

IIS 6 Management Compatibility

IIS 6 Metabase Compatibility

IIS Management Console

Management Service

IIS Management Scripts and Tools

Web Server

Application Development

ASP

ASP.NET 3.5

Server Side Includes

ISAPI Extensions

ISAPI Filters

.NET Extensibility 3.5

Common HTTP Features

Default Document

Directory Browsing

HTTP Errors

HTTP Redirection

Static Content

[Export configuration settings](#)  
[Specify an alternate source path](#)

< Previous   Next >   **Install**   Cancel

DESTINATION SERVER  
WS2012

## Add Roles and Features Wizard

### Installation progress

- Before You Begin
- Installation Type
- Server Selection
- Server Roles
- Features
- Web Server Role (IIS)
  - Role Services
- Confirmation
- Results**

View installation progress

**i** Feature installation

Installation started on WS2012

**.NET Framework 4.5 Features**

ASP.NET 4.5

**Web Server (IIS)**

FTP Server

FTP Extensibility

FTP Service

**Management Tools**

IIS 6 Management Compatibility

IIS 6 Metabase Compatibility

IIS Management Console

Management Service

IIS Management Scripts and Tools

**Web Server**

Application Development

ASP

ASP.NET 3.5

Server Side Includes

ISAPI Extensions

ISAPI Filters

.NET Extensibility 3.5

Common HTTP Features

Default Document

Directory Browsing

**i** You can close this wizard without interrupting running tasks. View task progress or open this page again by clicking Notifications in the command bar, and then Task Details.

[Export configuration settings](#)

< Previous
Next >
Close
Cancel

**Add Roles and Features Wizard**

## Installation progress

DESTINATION SERVER  
WS2012

- Before You Begin
- Installation Type
- Server Selection
- Server Roles
- Features
- Web Server Role (IIS)
  - Role Services
- Confirmation
- Results**

View installation progress

**Feature installation**


Installation succeeded on WS2012.

**.NET Framework 4.5 Features**

- ASP.NET 4.5

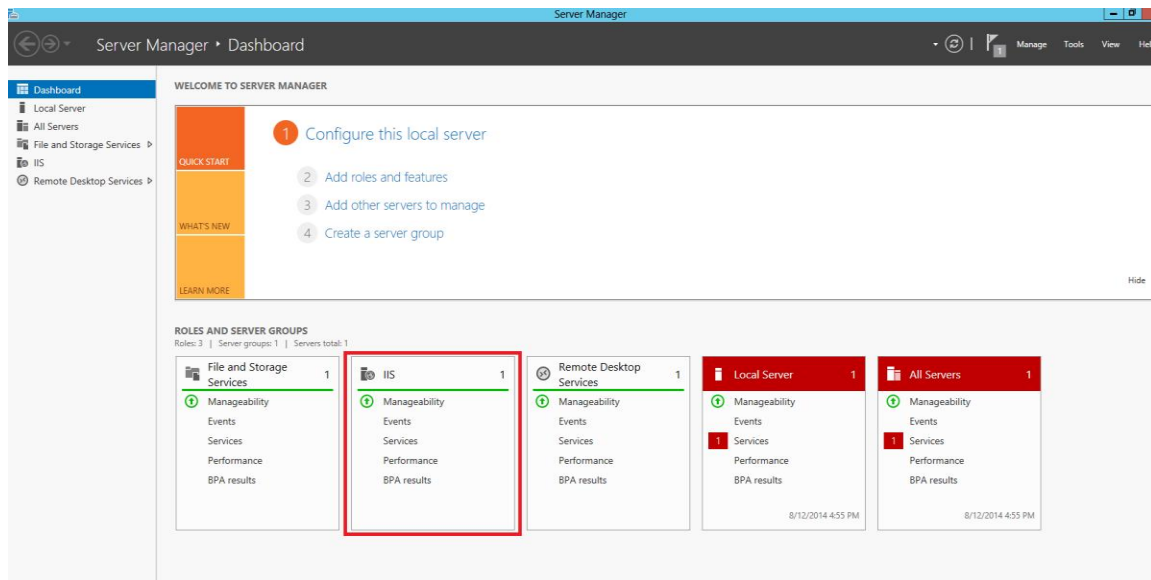
**Web Server (IIS)**

- FTP Server**
  - FTP Extensibility
  - FTP Service
- Management Tools**
  - IIS 6 Management Compatibility
  - IIS 6 Metabase Compatibility
  - IIS Management Console
  - Management Service
  - IIS Management Scripts and Tools
- Web Server**
  - Application Development
    - ASP
    - ASP.NET 3.5
    - Server Side Includes
    - ISAPI Extensions
    - ISAPI Filters
    - .NET Extensibility 3.5
  - Common HTTP Features
    - Default Document
    - Directory Browsing

 You can close this wizard without interrupting running tasks. View task progress or open this page again by clicking Notifications in the command bar, and then Task Details.

[Export configuration settings](#)

< Previous   Next >   **Close**   Cancel



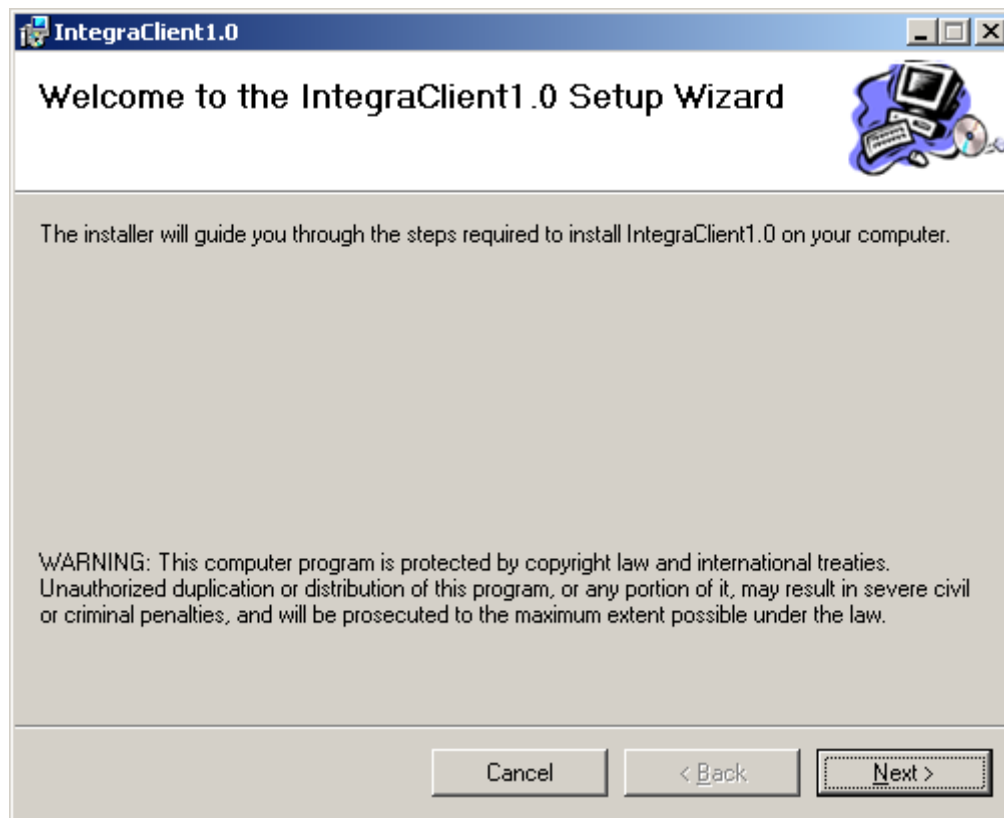
## Installation Package for Integra32™ Web Client

After IIS is installed go to the folder that contains the installation package for Integra Client.

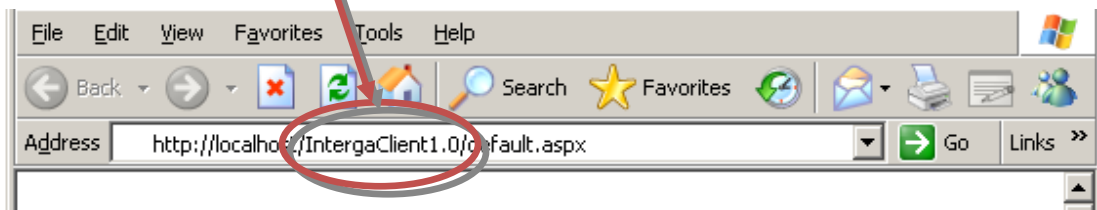
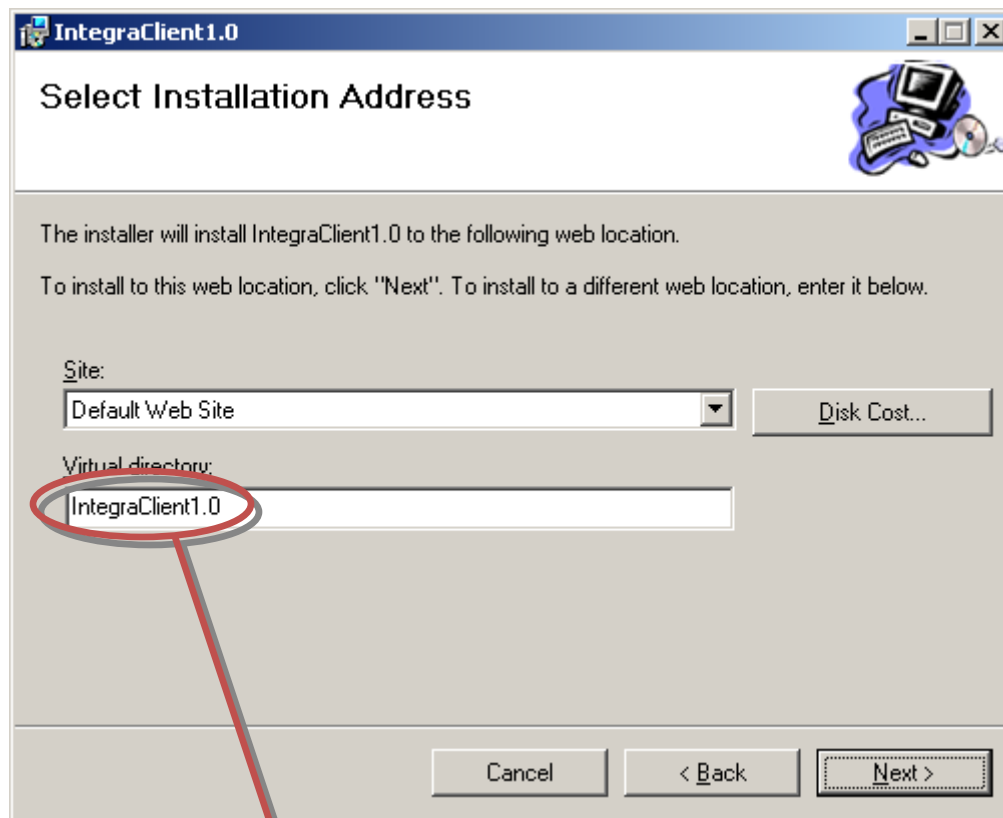


Double click on the setup file.



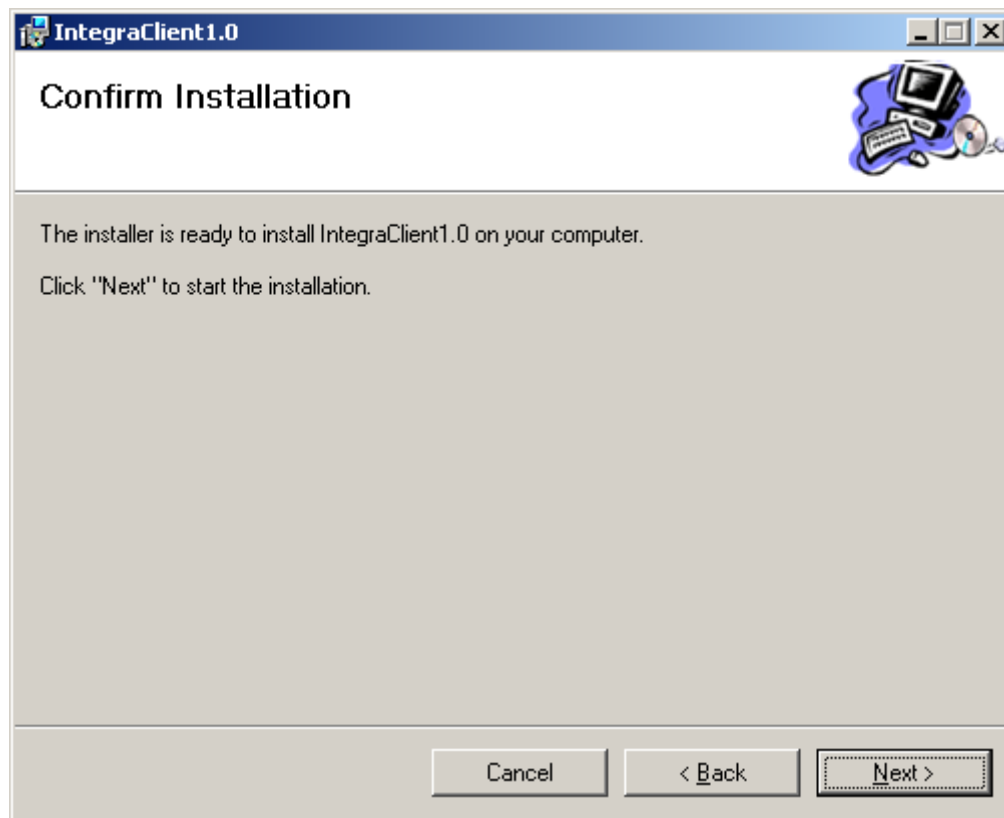


Click 'Next' to continue with installation.

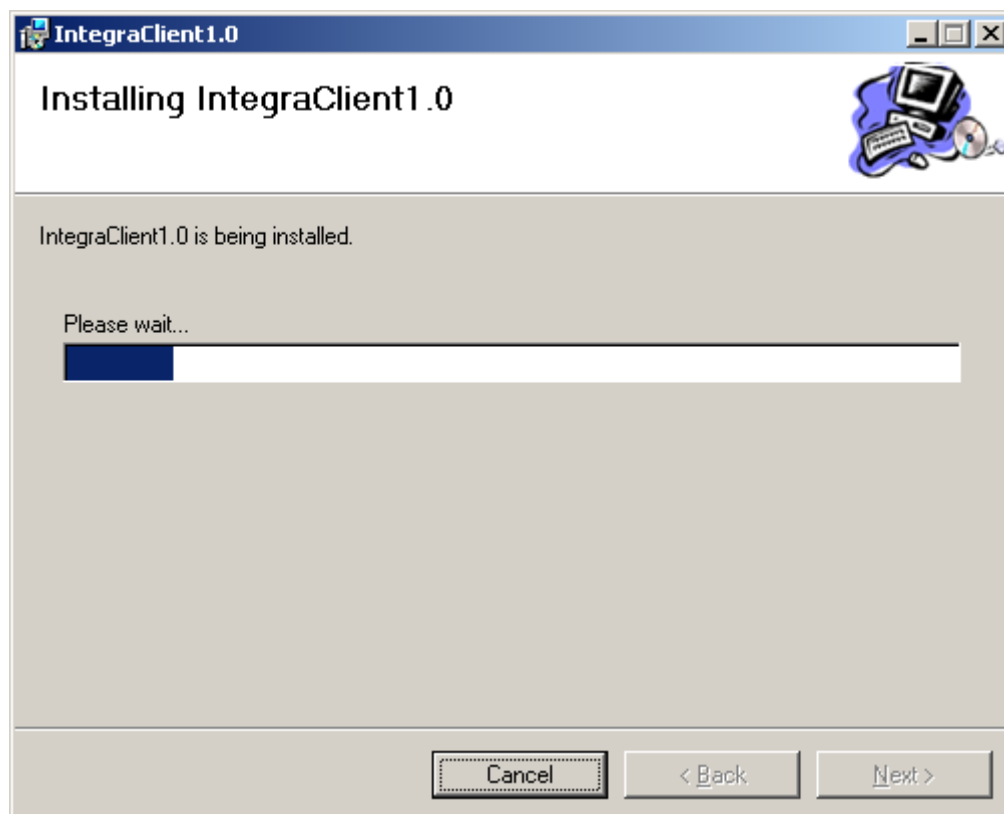


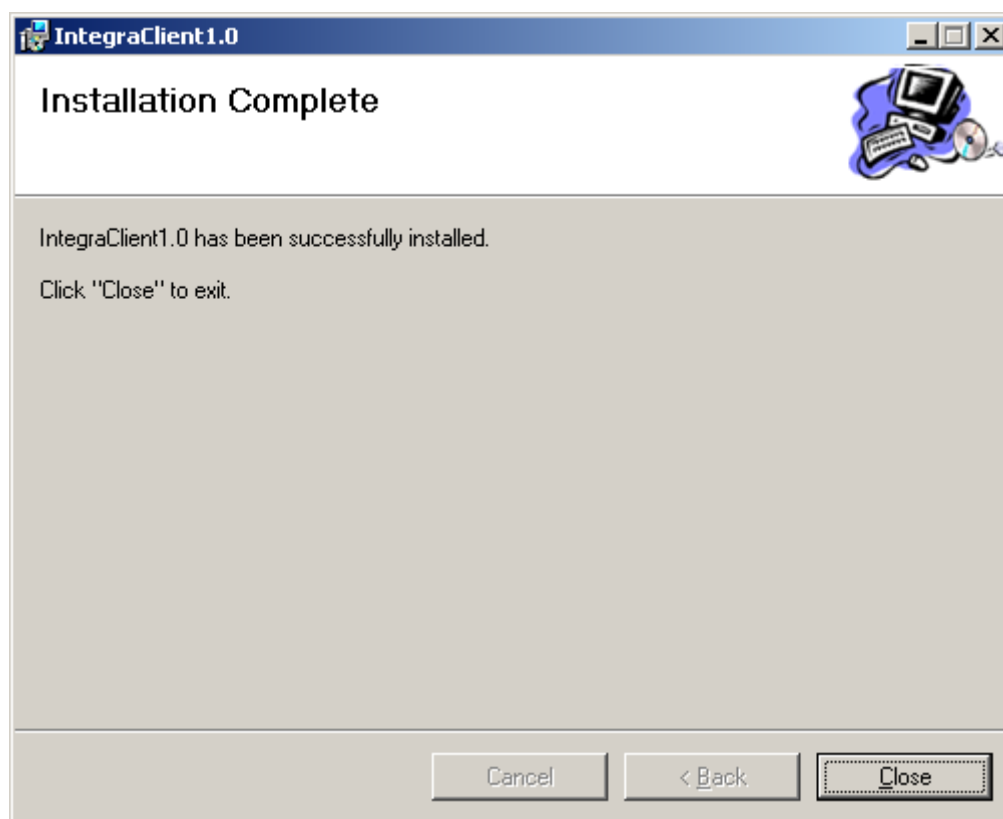
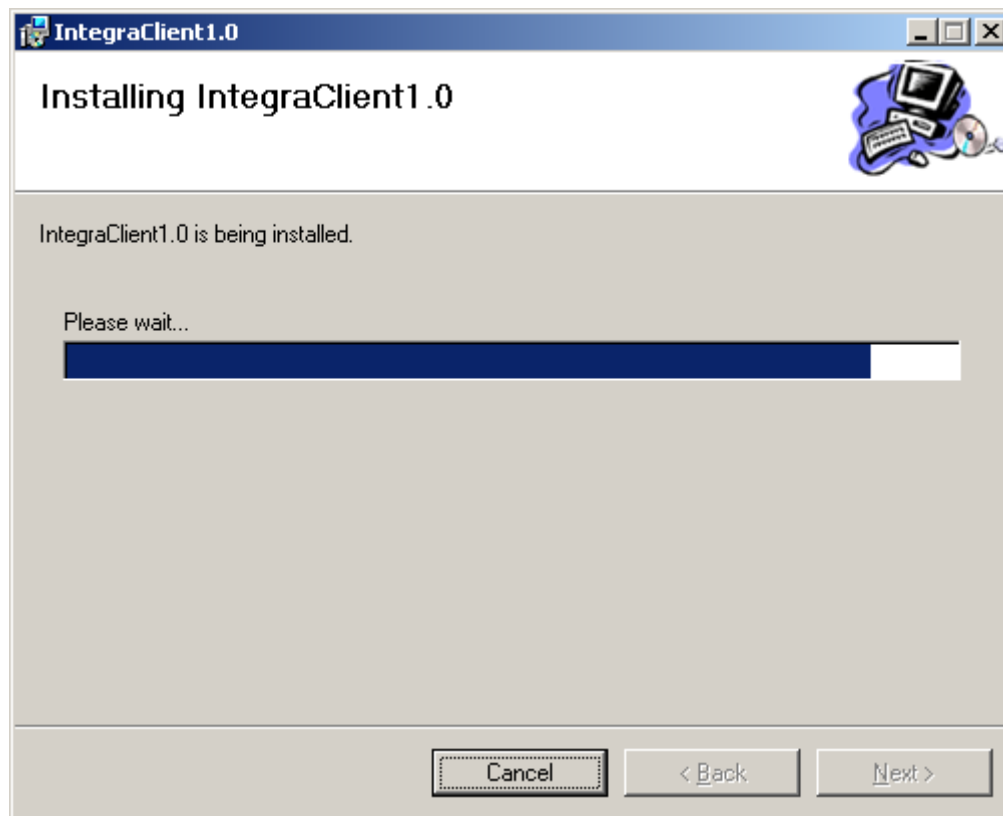
"Virtual Directory" is the name of the website you are creating

Set the installation location and click 'Next' to continue.



Click 'Next' to continue with installation.



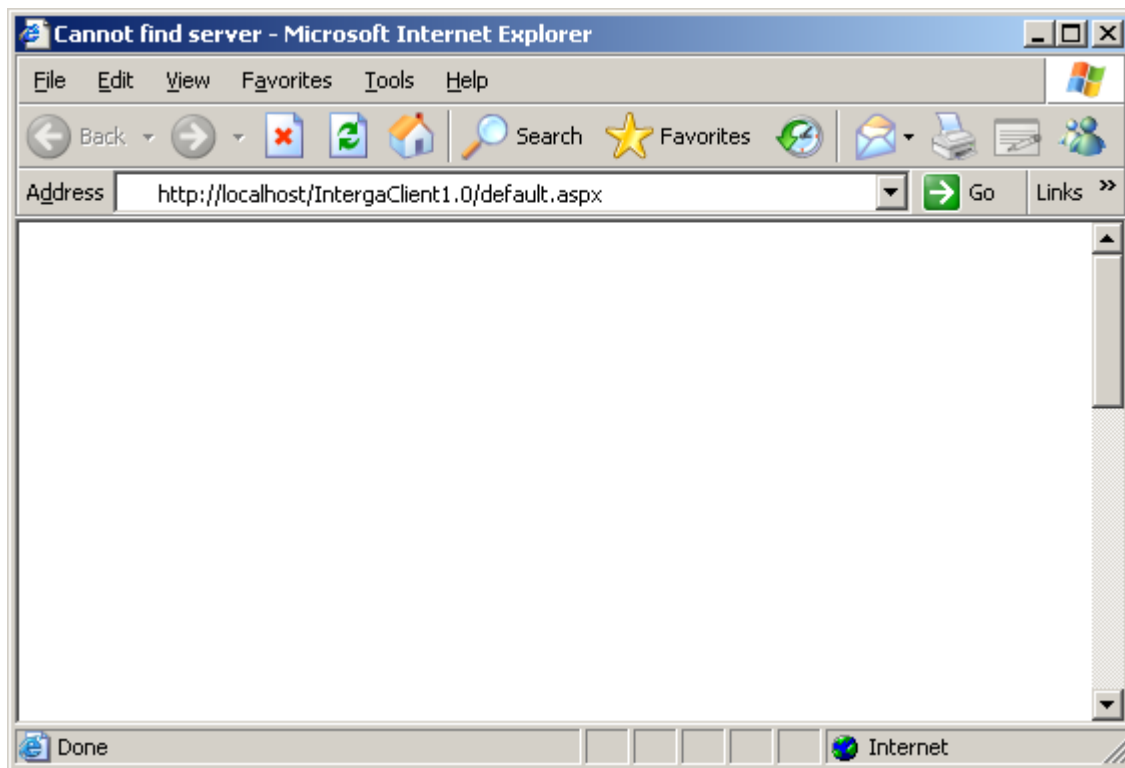


Click 'Close' to complete the installation.

## Login via Web Client

Open Microsoft Internet Explorer and enter the address of the local server to login. Click 'Go'.

<http://localhost/IntegraClient1.0/default.aspx>

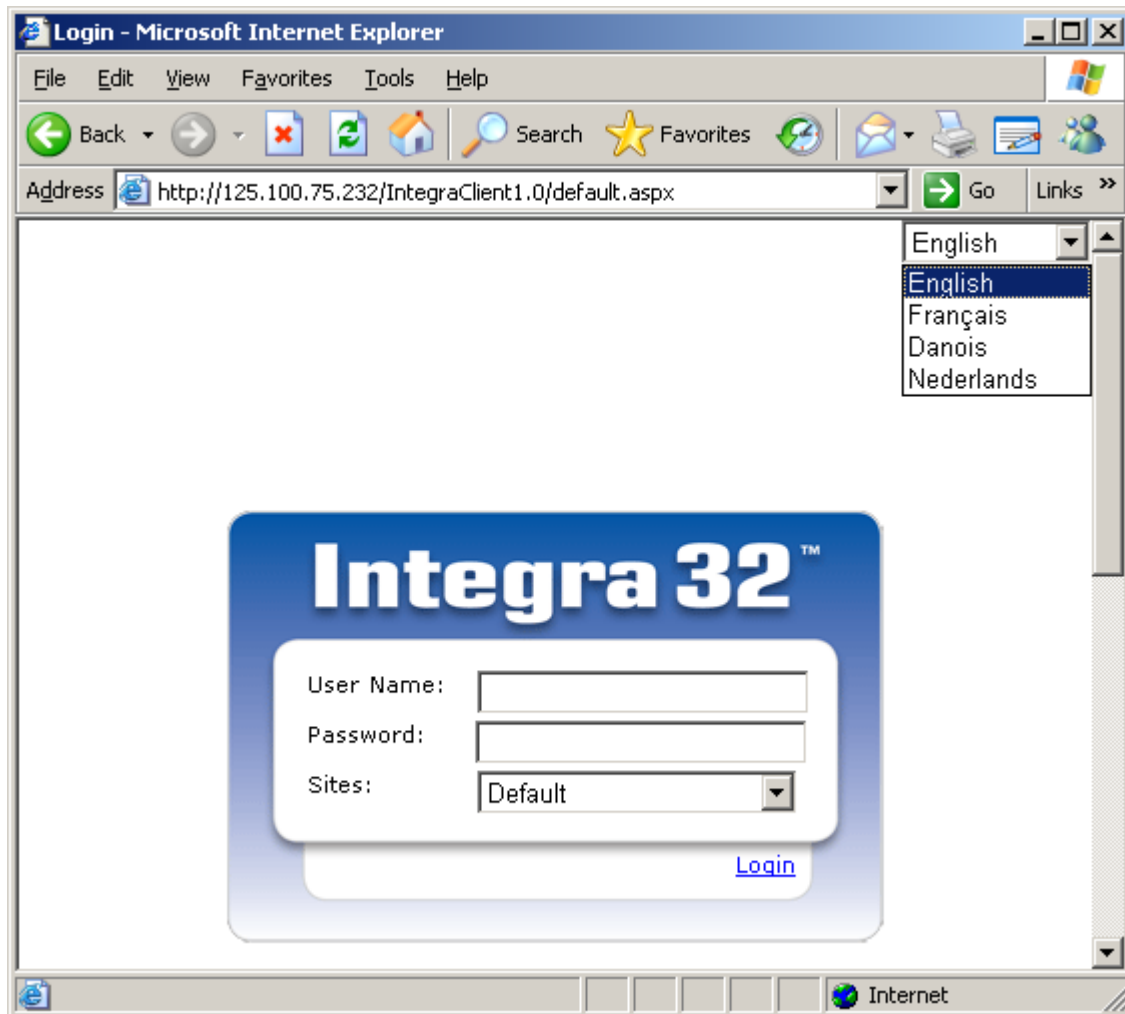


Substitute an IP address or the server machine's name for "localhost" to connect to a server across a network (including the Internet).

<http://IP/IntegraClient1.0/default.aspx>

<http://server machine's name/IntegraClient1.0/default.aspx>

For local testing you can use "localhost" or 127.0.0.1



Select a language for the user to operate with (the default is English). Enter the user's name and password, and then click 'Login'.



## Important notes:

Verify that IIS web services and Integra Client and Server applications are not blocked by a firewall.