

Step 1: Install the Software



Installation from CD

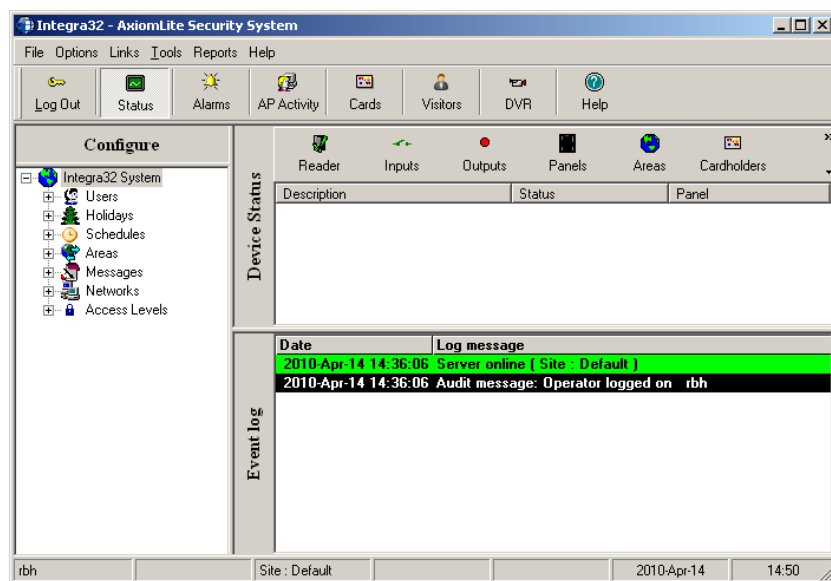
1. Before installing the Integra32™ software please read carefully the document *TB63_InstallIntegra32r4.2.doc* in the documents directory of the CD.
- ✎ If it becomes necessary to remove Integra32™ please refer the document *TB63_InstallIntegra32r4.2.doc* in the documents directory of the CD.

Quick Reference Guide

Step 2: Start Program



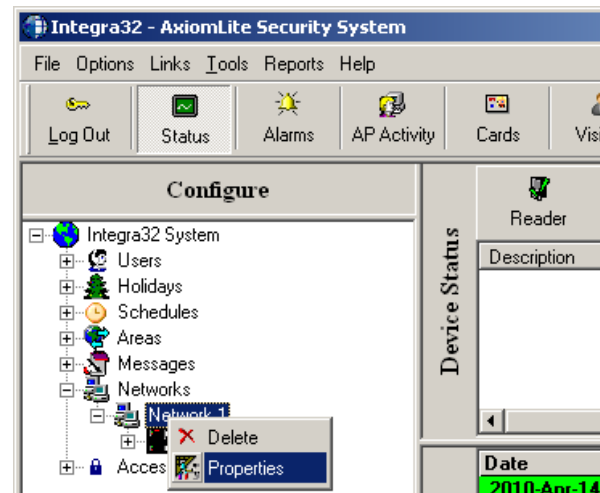
1. Start Integra32 program (*this may be done with a shortcut*).
2. Enter 'Login Name' (*the default login name is RBH*).
3. Enter password (*the default password for RBH is 'password'*). Then click 'OK'



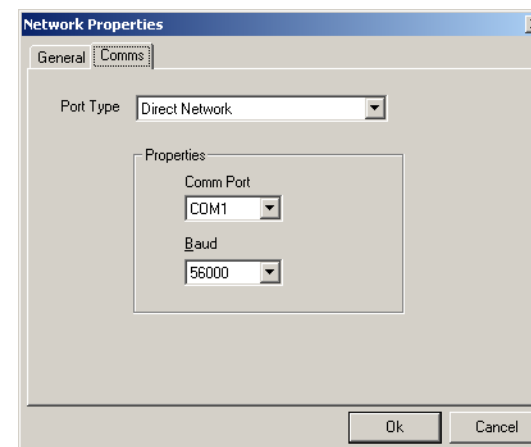
Step 3: Hardware Configuration

Configure Comm Ports, and Network Settings

1. **Enter** the Integra32 database (*either by clicking the + sign, or double-clicking on the 'tree-view branch'*). One Network is already added to the system by default. To add additional networks, right click on Networks to add networks. Up to 16 Networks can be added. Select the first network and right click on it. Go to properties for that Network.



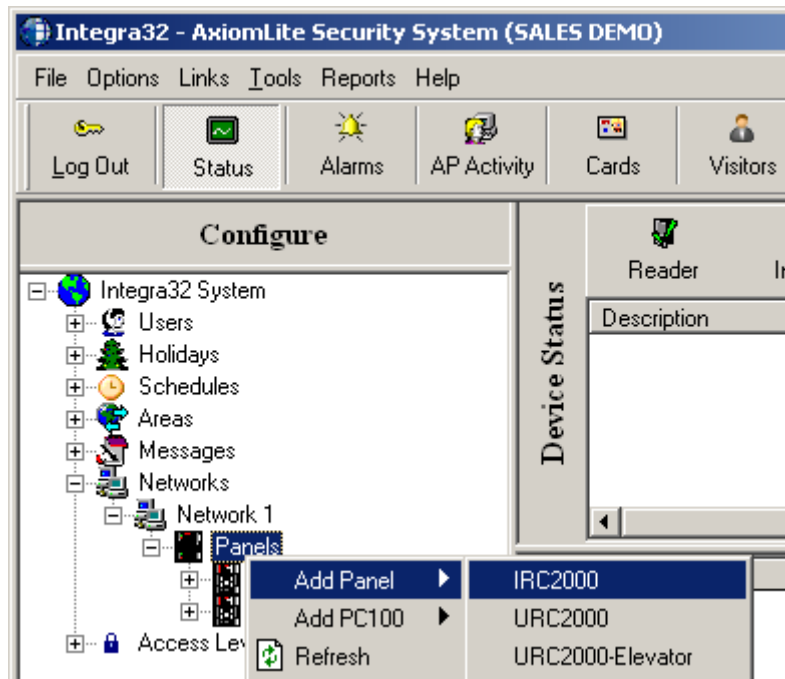
2. From the *General* tab you can edit the network description.
3. Click the *Comms* tab and select a Port Type (*click the down arrow in the 'Port Type' box*). Select the PC COM port here and its baud rate setting.



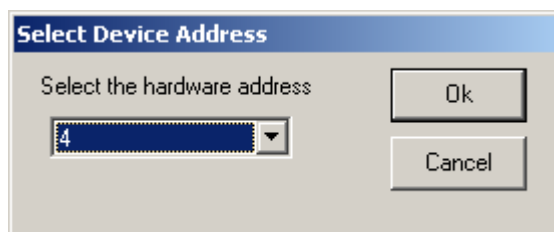
Adding Panels

One panel is already added to the system by default. To add additional panels:

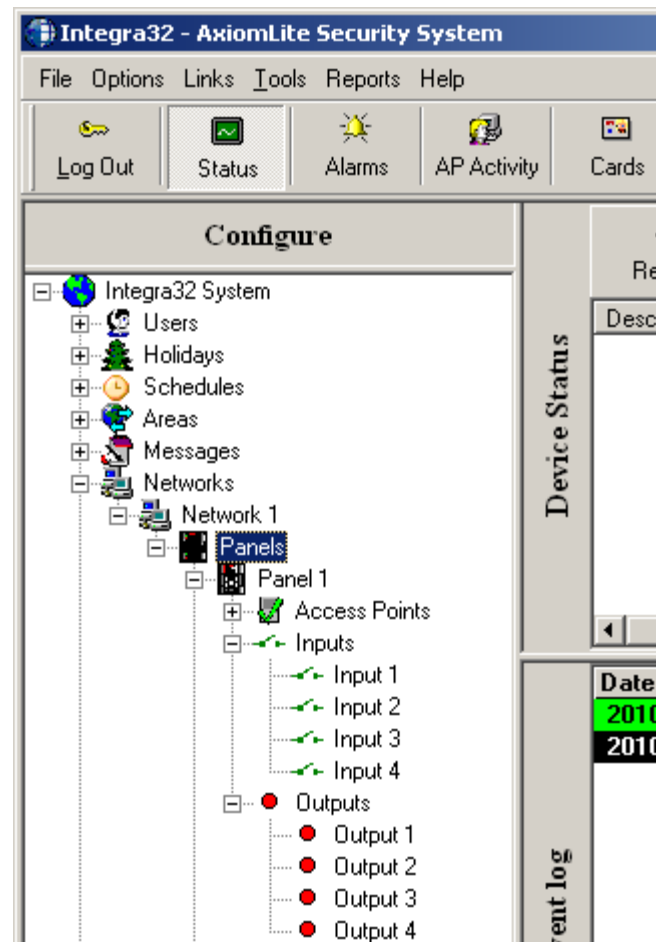
1. Right click on Panels to add panels. Up to sixteen panels can be selected.



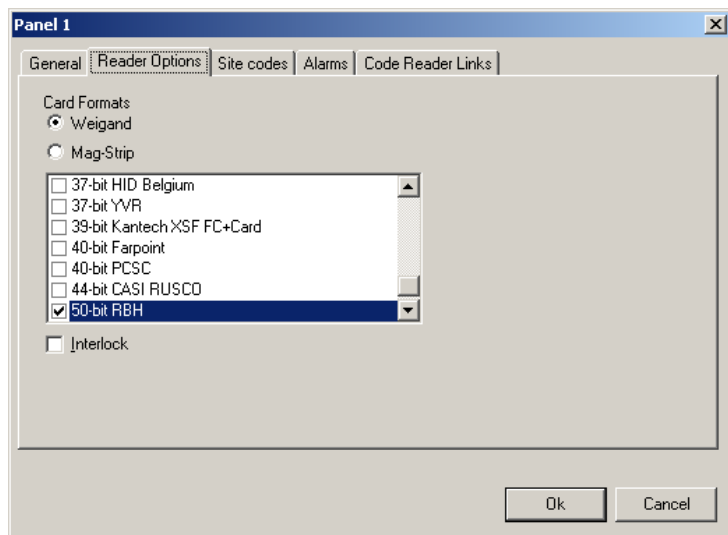
2. Click Add Panel and select the hardware address for the panel being added.



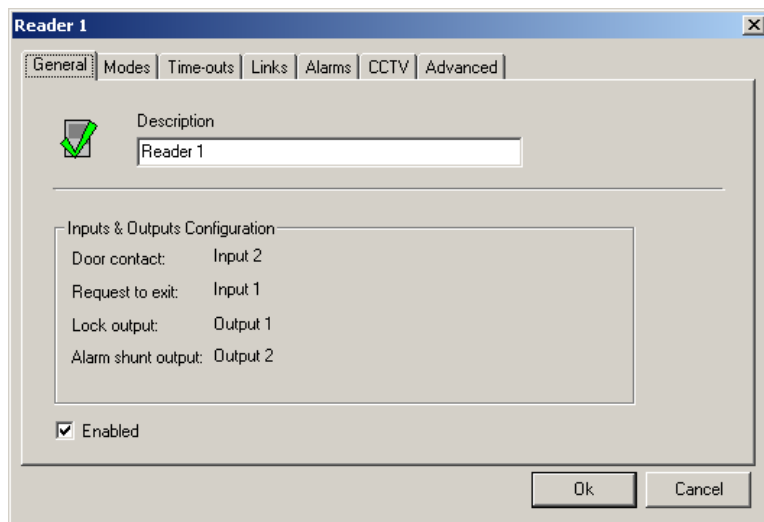
3. The selected panel gives you two readers, eight inputs and eight outputs (*with default settings*).



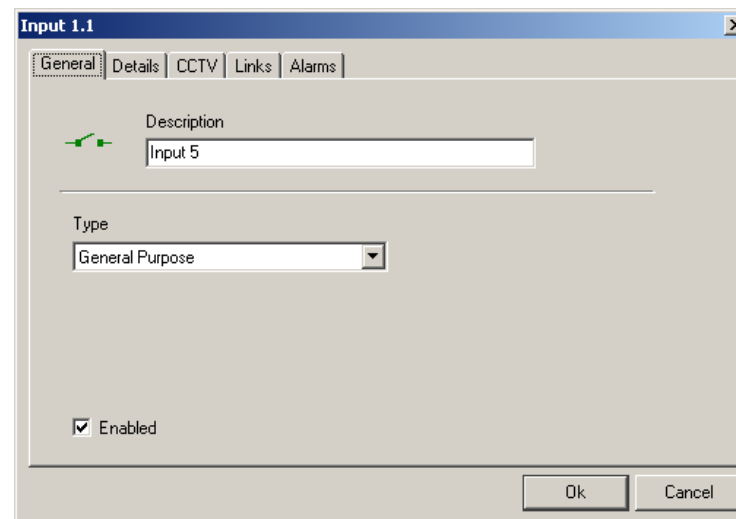
4. Choose a Panel and then right click on it, then select properties to define different settings for the panel.



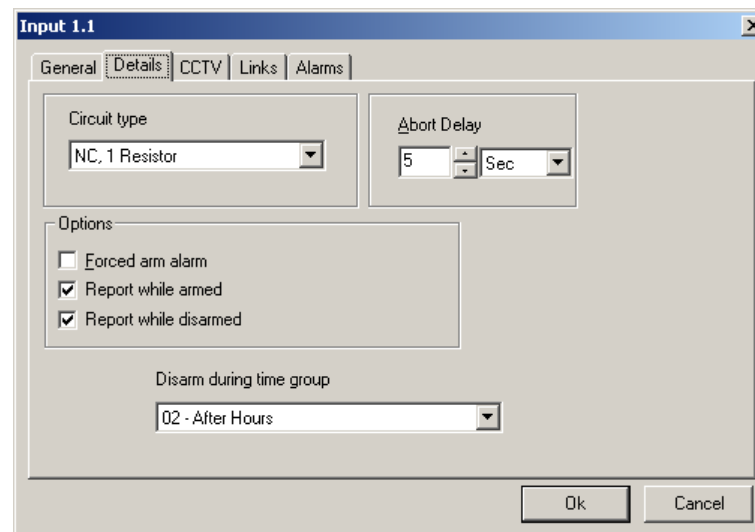
5. Each panel has two access points (*Reader 1* and *Reader 2*). Select the properties for one reader and define the settings for that reader. Each reader's properties screen includes General, Modes, Time-outs, Links, Alarms, CCTV, and Advanced tabs.



6. Each panel has eight inputs and eight outputs. These inputs and outputs can be associated with the access point or used as general-purpose. In properties under the General tab, the Type box is used to specify an input as general purpose or it can be assigned to a specified task (e.g. *RTE*, *DC*). Each General Purpose Input's properties screen includes General, Details, CCTV, Links, and Alarms.



7. The Details tab specifies the Circuit type of the input and its abort delay timing.
8. Inputs can be; Normally Open or Normally Closed, one, two or no resistor, and reporting, or non-reporting.



9. The panel's eight outputs can be associated with the access point or used as general-purpose. These general-purpose outputs can be used for a variety of purposes. Default outputs are assigned the specified task (e.g. *Lock* or *Handicap Output*). Each general-purpose output's Properties screen includes General, Details, CCTV, and Links.

Output 1.1

General | Details | CCTV | Links

Description
Output 1

Type
General Purpose

☒ Enabled

Ok Cancel

10. Output types can be *Energized* or *De-Energized*, reporting or non-reporting. These can be assigned from the *Details* tab.

Output 1.1

General | Details | CCTV | Links

On State
Energized

Output State On during time group
02 - After Hours

☒ Report to PC

Ok Cancel

11. Once inputs, outputs, and access points have been created, assign them different task to perform (*assign links both local and global*). Global Links can be assigned from the Links button of the menu selection.
12. The information in CCTV tab for all the events is required for DVR interface.

ACCESS LEVEL

Assigning Access Points to Schedules creates Access Levels. They are created so that cardholders can be easily given access rights. Before cardholders are entered, any additional Access Levels that are required should be programmed. The only default Access Level is Master. Right click on Access Levels to add a new Access Level. Then select the Access Level. Right click for Properties and form the Access Level tab assign schedules to access points.

Access Level Properties

General | Access Level | Elevators Access Level

| Reader | Schedule |
|----------|----------------------------|
| Reader 1 | 02 - Mon-Fri 7:30am-5:30pm |
| Reader 2 | 02 - Mon-Fri 7:30am-5:30pm |
| Reader 3 | 02 - Mon-Fri 7:30am-5:30pm |
| Reader 4 | 00 - Never |
| Reader 5 | 02 - Mon-Fri 7:30am-5:30pm |
| Reader 6 | 03 - After Hours |
| Reader 7 | 04 - Mon-Fri 8:00am-5:00pm |
| Reader 8 | 04 - Mon-Fri 8:00am-5:00pm |

Ok Cancel

SCHEDULE

Before cardholders are entered, any additional Time Groups that are required should be programmed. The defaulted Time Groups are Always and Never. For the cardholders to access *Access Points*, Time Groups will be needed. Right click on Schedule to add a new Schedule. Then select the Schedule. Right click for Properties to edit the time zones.

| | Start | End | Sun | Mon | Tue | Wed | Thu | Fri | Sat | H 1 |
|-----------|-------|------|-----|-----|-----|-----|-----|-----|-----|-----|
| Period 1: | 0000 | 0700 | | ✓ | ✓ | ✓ | ✓ | ✓ | | |
| Period 2: | 0000 | 2400 | ✓ | | | | | | ✓ | ✓ |
| Period 3: | 1800 | 2400 | | ✓ | ✓ | ✓ | ✓ | ✓ | | |
| Period 4: | 0000 | 0000 | | | | | | | | |
| Period 5: | 0000 | 0000 | | | | | | | | |
| Period 6: | 0000 | 0000 | | | | | | | | |
| Period 7: | 0000 | 0000 | | | | | | | | |
| Period 8: | 0000 | 0000 | | | | | | | | |

HOLIDAYS

Up to forty holidays can be assigned. To add a holiday, right click the *Holidays* tab. Select the holiday's Properties to enter the Holiday's description and range (start from date/time to end date/time).

Holiday Properties

Holiday

Description: Christmas & Boxing Day

Select a date

24-Dec-2004 12:00:00 PM

End date

26-Dec-2004 10:00:00 PM

PANEL COMMANDS

After the hardware has been configured, a full download should be done to insure that all of the programming gets to the panel(s). From the main command screen of Integra32™ software, select a panel and then right click to access its menu. Select Download > All Files.

Reader Inputs Outputs Panels Areas

Device Status

| Description | Status |
|-------------|--------|
| Panel 1 | Online |
| Panel | Online |

Context Menu for Panel 1:

- Version
- Set date/time
- Get date/time
- Download
- Reset
- Clear log
- Schedule Inquiry

Sub-menu for Download:

- Cardholders
- All Files

Cardholders

Clicking the *Cardholder* button on the main window enters cardholders.

Enter data:

1. Cardholder name (*Last name and First name*).
2. Define Access level.
3. Activation Date defaults to current date and time. (*Although it could be changed*).
4. Deactivation Date will be 1 Jan. 2038 (*unless changed*).
5. Card Number is added from Add button in the Cardholder screen.

Multiple cards can be assigned to one record (*each with its own description*).

Quick Reference Guide

Other data is optional and can be included later. Badges can be made here too clicking the *Templates* button.

Integra32 - AxiomLite Cardholders

File Edit Cancel Delete Search Multi Cards F Print Receipt

Last name Card First name Test Initials Cardnumber

Cards Profile Photo Notes More Fields

558931

558931

Access level 1 Master

Activation date 2010-Apr-6

Deactivation date 2038-Jan-1 Usage Count 255

Status Inactive PIN Code

Type Normal

☐ Ignore Antipassback ☐ Ignore Auto Void

☐ Unlock Privilege (2)

☐ High Security Privilege (4)

☐ Link Execute Privilege (3/5)

☐ Extended unlock time

☒ Disabled

Add Edit Remove Copy

2 of 2

A partial download of cardholder data is automatically sent out to the panels after all cardholders have been entered. Test your cards to insure the system is operating correctly.

REPORTS

From the Menu select Reports. There are two types of Reports. History reports will list the events that have happened and Database reports will list the items in the system.

Quick Reference Guide

History Reports

History reports can be obtained on any events in the Integra32. As shown in the picture below, History reports can be obtained for different days by changing the date parameters. Select the Preview button to view any selected history reports.

History Report

File Reports Help

Reports Preview DVR

Start Date 1 May 2006 End Date 31 May 2006 Start Time 12:00:00 AM End Time 11:59:59 PM

☐ Daily Report

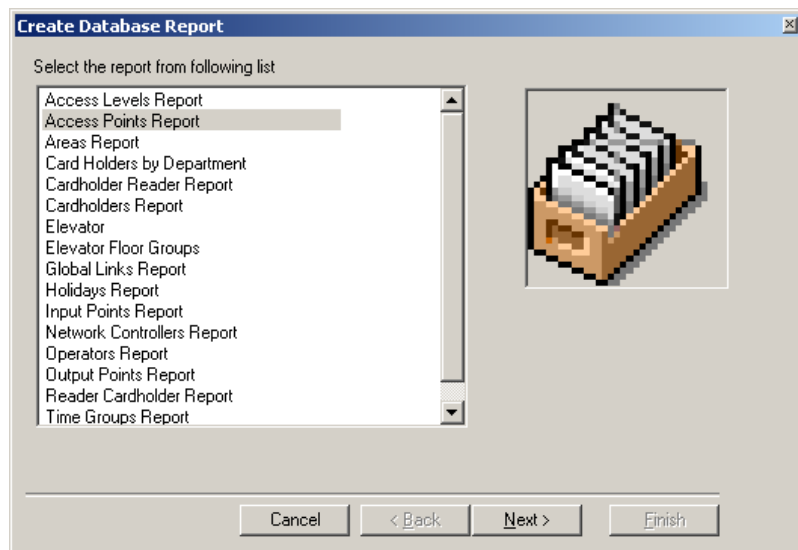
Click Preview/Print to output a report for all selected events and messages for start to end date/time.

DVR interface for selected History Event can be displayed through the DVR button here.

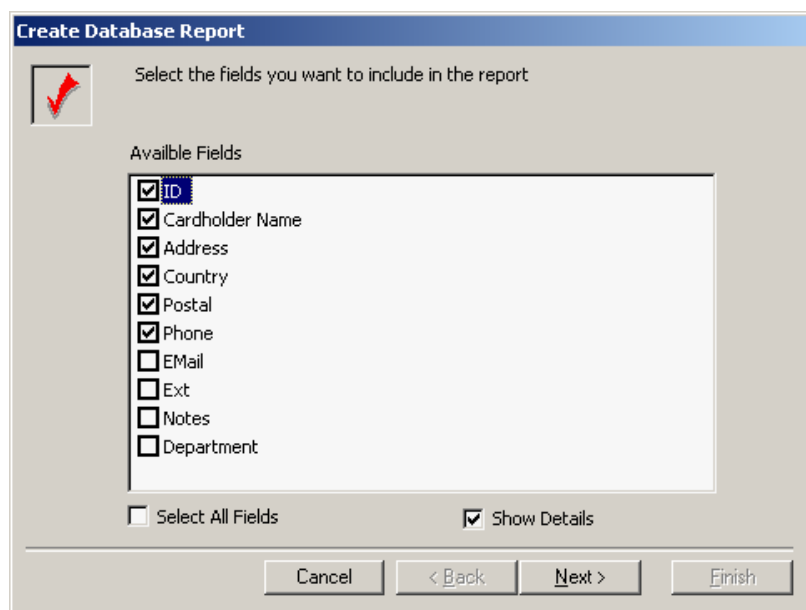
Database Reports:

Database Reports allow the user to print out the complete description of the database. It shows the user what he has in his database. Database report is selected under the same menu selection called Reports. Database reports can be viewed as simple or detailed reports.

Quick Reference Guide



Checking or unchecking the Show Details box will display the simple or detailed Database Report.



Quick Reference Guide

Select the Preview Report button to view or print the report.

