



BFR 350

Fingerprint Readers

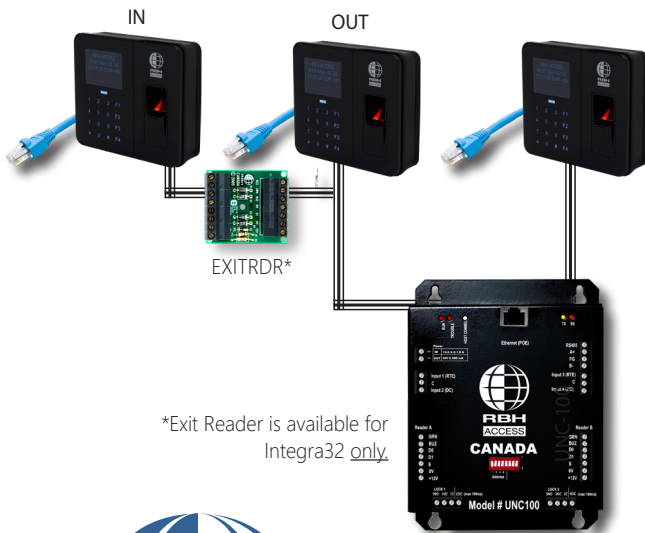


Innovative system integrated fingerprint readers by RBH are available with Multi-prox proximity readers. Users will benefit from its unparalleled performance, ease of use, precision and fast matching speed.

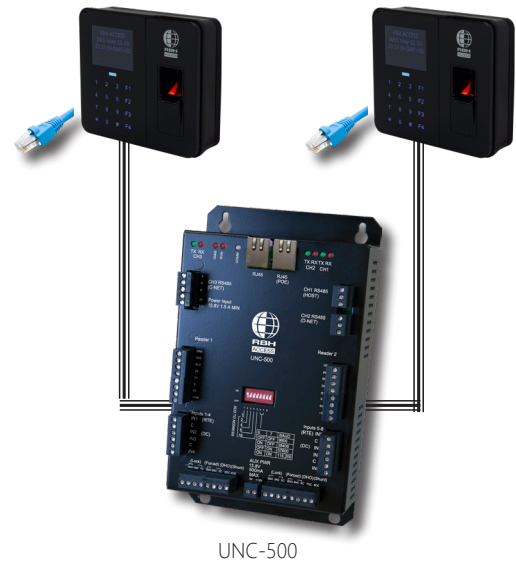
This Fingerprint reader features a highly accurate optical sensor with automatic finger detection (no need to enter PINs). The user will also benefit from the advanced matching algorithm and audio-visual indications for acceptance & rejection of fingerprints.

Specifications	
	RBH-BFR-350-P <i>Formerly RBH-BFR-350S</i>
Templates	9,500
Integrated Proximity Reader	125KHz Multi-prox
PC to Reader / Panel to Reader	Ethernet (CAT5) / Weigand (6 Cond. Shielded 18 AWG)
Dimensions / Weight	5.7" (145 mm) Wide x 4.92" (125 mm) High x 1.3" (33 mm) Deep / 12 oz. (340 g)
Operating Temperature / Humidity	32° F to +131° F (0° C to +55° C) / 0 - 95% RH
Power Requirements	DC 9~24V, 1A
Rating	IP-65
Sensor (Resolution) / Template Size	Optical (500 DPI) / 352 bytes
Authentication Time Speed	≤ 4 sec
False Rejection / Acceptance Rate	0.01% / 0.001%
Features	LCD Display: 128 x 64 pixels; 2 LEDs; 10 number keys; 6 function keys; 1 bell button
Authentication Modes	Card only, Card & Finger, Card or Finger, Finger only

*Specifications are subject to change without notice



*Exit Reader is available for Integra32 only.



WWW.RBH-ACCESS.COM

© RBH Access Technologies, Inc. 2019